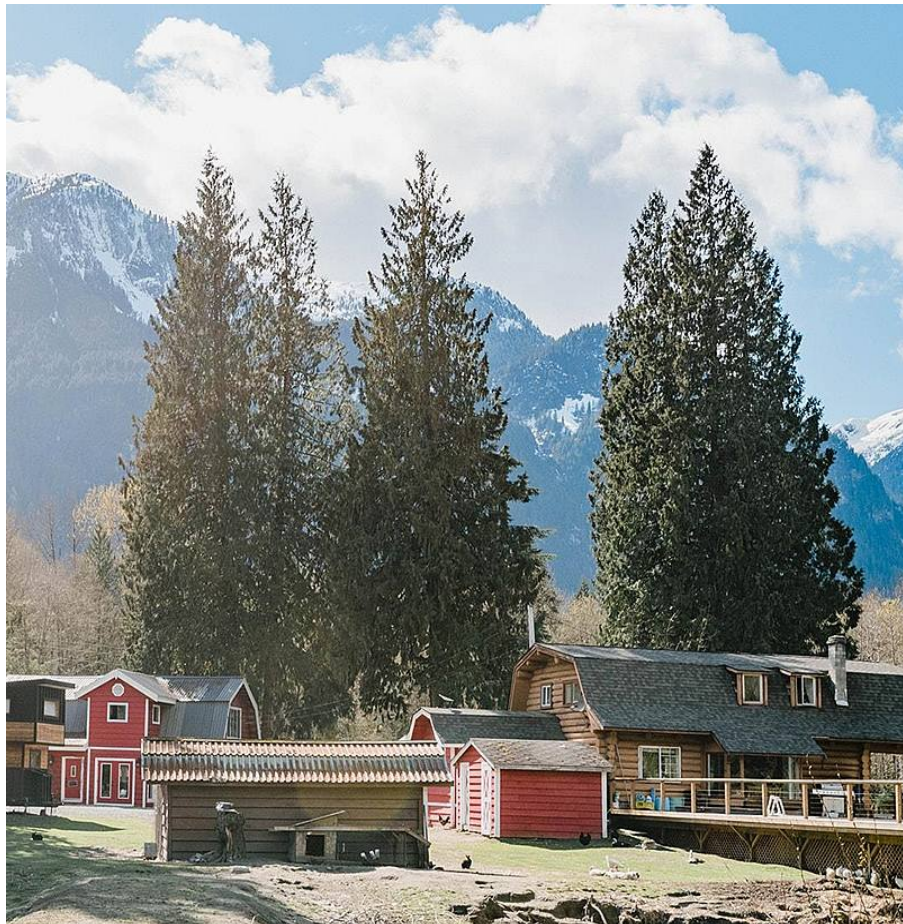


1750 Olsen Road, Squamish

\$3,499,888



This incredible 20 acre property in the heart for Squamish Valley offers spectacular views of glaciers, waterfalls, mountains, and even a private pond with its own island! Located just 15 minutes drive from Squamish, this homestead feels like a trip back in time. The log home has had too many upgrades to list, including a massive sundeck with it's own pool and hot tubs. As well the secondary buildings offer multiple revenue generating streams to help sustain whatever future dreams one may have. From organic farming to eco village possibilities, vineyards to livestock, Cupcake Farm has so much more potential than what is already offered in it's current turn key state. If you're thinking of making the switch and building your dreams this is an opportunity not to be missed.

KEY INFORMATION

MLS® R2671518

Residential Detached

Upper Squamish

4 Bedrooms

2 Bathrooms

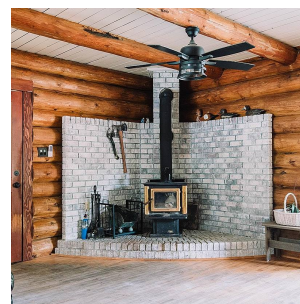
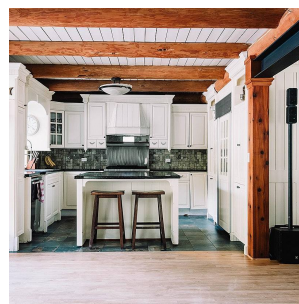
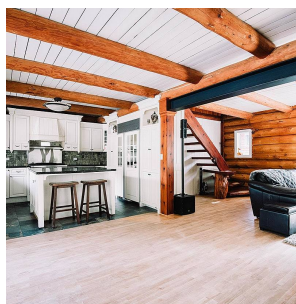
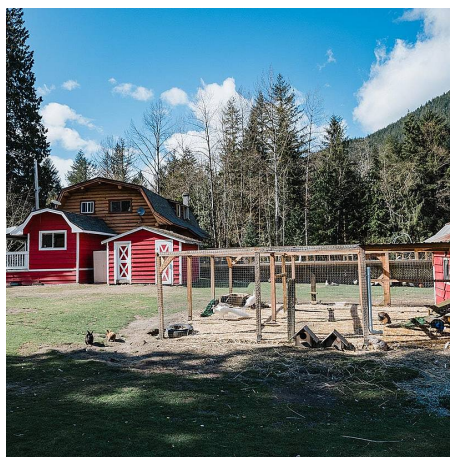
1,902 SF

FEATURES

Year Built: 1983

Views: Mountain & Water

Listed By: Harcourts



rennie