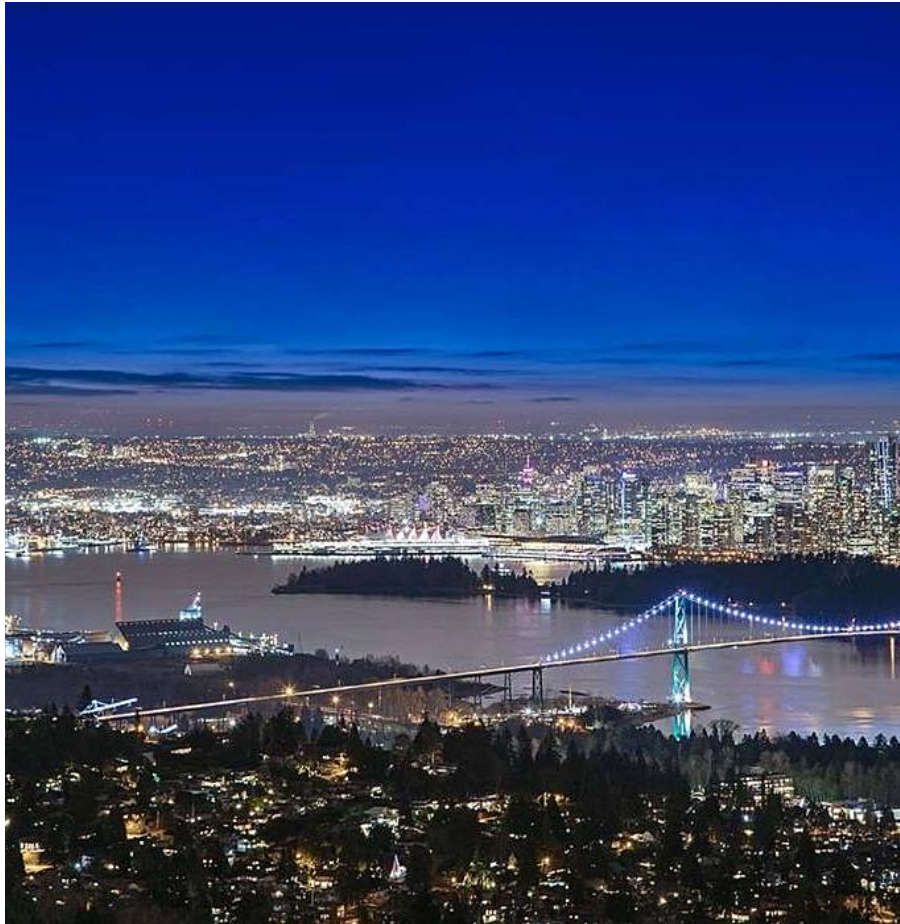


1412 Chippendale Road, West Vancouver

\$5,488,000



PANORAMIC VIEWS OF CITY, LIONS GATE, MOUNTAINS & WATER! Stunning CHARTWELL south facing home with fantastic views! This 5 bedroom, 5 bathroom 4,200 sqft home is Steps to golf club, transport and school. One of the best priced properties in the area! This lovely property offers a wonderful opportunity to build your dream home.

KEY INFORMATION

MLS® R2671765

Residential Detached

Chartwell

5 Bedrooms

5 Bathrooms

4,268 SF

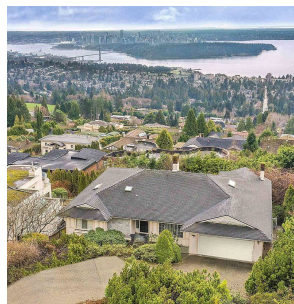
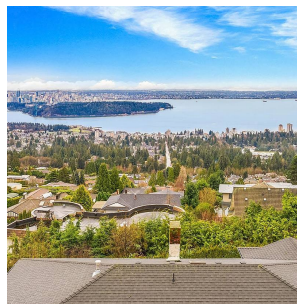
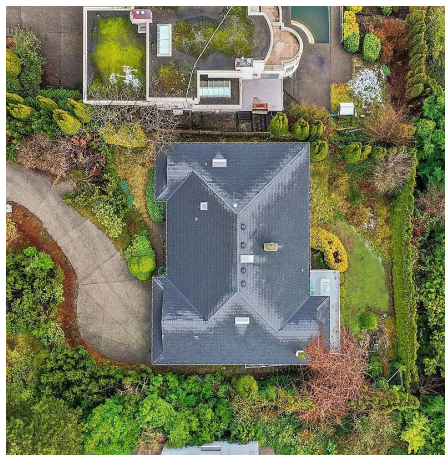
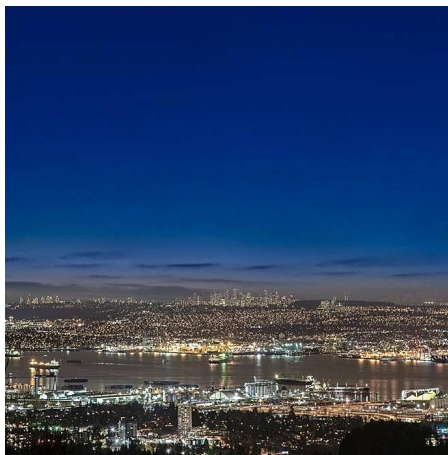
12,002 SF Lot

FEATURES

Year Built: 1987

Views: Harbour, City, Bridge & Park

Listed By: Behroyan & Associates Real Estate Services



rennie