

607 1365 Pemberton Avenue, Squamish

\$970,000



Live on the top at Vantage! This PENTHOUSE corner unit has unobstructed 180 degree views and offers 3 bedrooms and 2 full bathrooms. The main living area is an open concept where the exceptional kitchen will be the place for hosting. The living area overlooks the surrounding mountains and downtown Squamish from large windows that cover two sides and let in lots of natural light. Enjoy the spectacular views to the North facing Mt. Garibaldi and to the East of the Stawamus Chief from a large wrap-around patio. Conveniently located downtown makes everything you need within walking distance.

KEY INFORMATION

MLS® R2671796

Residential Attached

Downtown Squamish

3 Bedrooms

2 Bathrooms

1,068 SF

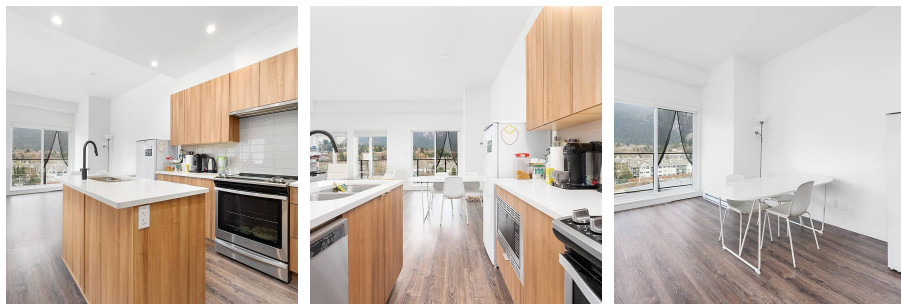
\$491.84 Maintenance Fees

FEATURES

Year Built: 2020

Views: Mountains

Listed By: Macdonald Realty



rennie