

510 13978 Fraser Highway, Surrey

\$509,900



Contemporary living at its best! Absolutely amazing and like new 1 bedroom condo with 582 SF of spacious living that overlooks the QUIET inside courtyard at the Fraser Landmark that's located in Surrey's Downtown District. This meticulously maintained home is just over 1 years old and features open concept, stainless steel appliances, laminate floors throughout and carpet in the bedroom, in-suite laundry, high ceilings, 1 parking. The fantastic west facing balcony brings in a lot of light and also has a great view to relax and BBQ. Great complex with caretaker, recreation room and playground, close to the Skytrain, buses, parks, community centre, shopping, restaurants and more. Open house 2:30-4 Sat/Sun May 14/15

KEY INFORMATION

MLS® R2671797

Residential Attached

Whalley

1 Bedroom

1 Bathroom

582 SF

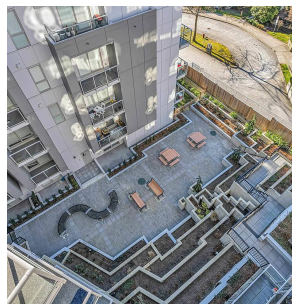
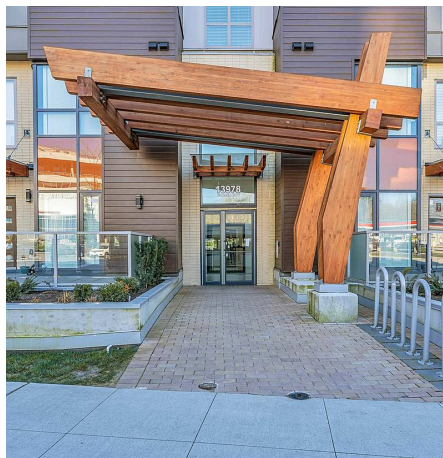
\$335.48 Maintenance Fees

FEATURES

Year Built: 2020

Views: CITY VIEW

Listed By: RE/MAX City Realty



rennie