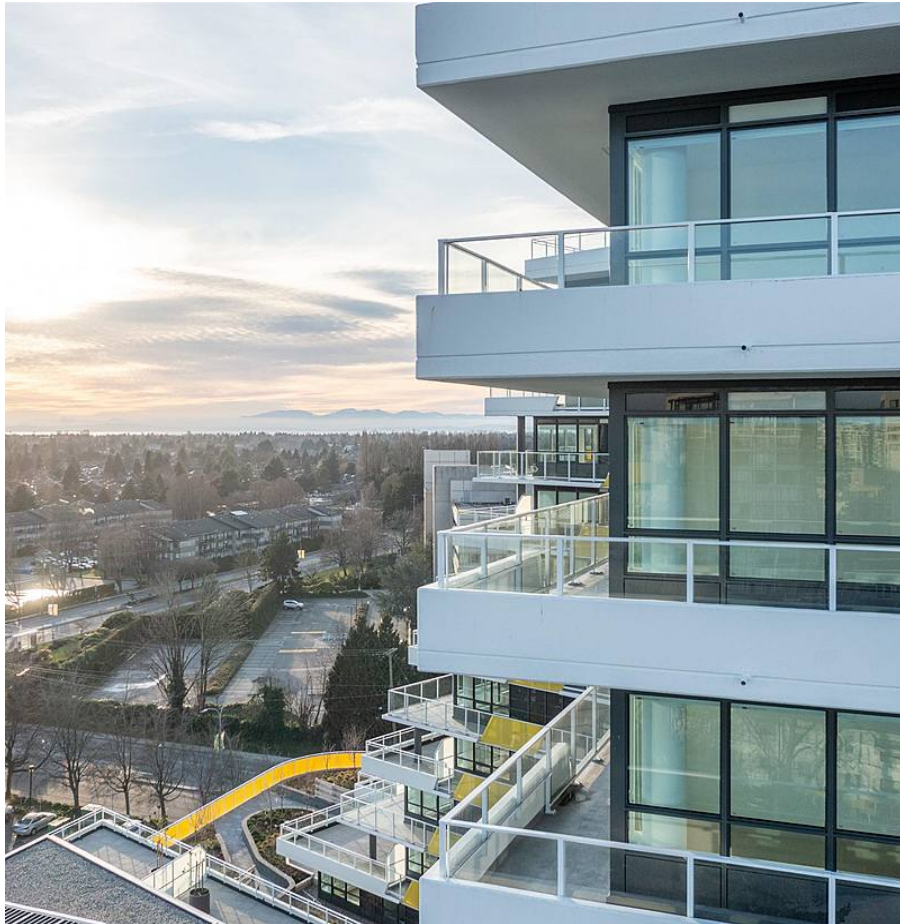


Th505 5788 Gilbert Road, Richmond

\$1,308,900



Rare above podium level TOWNHOUSE available in Richmond's most iconic building. CASCADE CITY by Landa Global. This home features over 1500 SF of outdoor space and a PRIVATE rooftop deck. Bright, open layout with plenty of windows for natural light and facing the quiet side towards the courtyard with direct access. A/C, Miele appliance package + engineered hardwood floors throughout. Surrounded by restaurants, shops and services, Richmond Centre, Aberdeen Centre + YVR Airport all a short drive away! Canada Line nearby. Amenities incl. exclusive 3,000 SF double height Fitness Centre, guest suite, multi functional club lounge, landscaped 25,000 SF podium level outdoor space + much more! Parking & storage included! Move in ready

KEY INFORMATION

MLS® R2671875

Residential Attached

Brighthouse

2 Bedrooms

3 Bathrooms

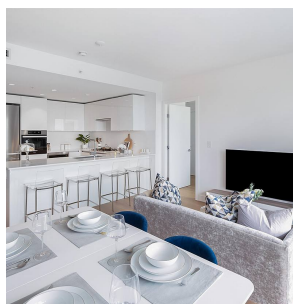
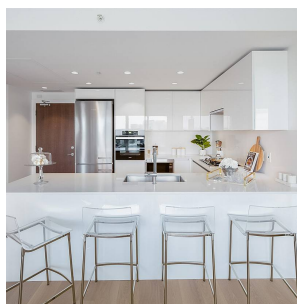
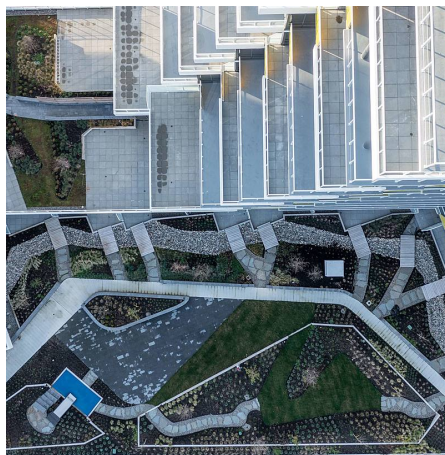
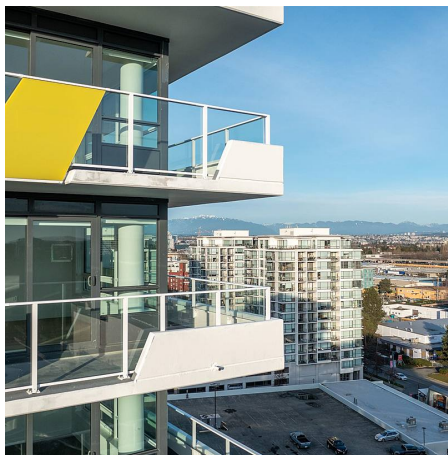
1,234 SF

FEATURES

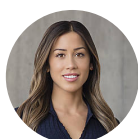
Year Built: 2022

Views: CITY, GARDEN

Listed By: rennie & associates realty ltd.



Hanson Lu PREC*
604.787.2578
hlu@rennie.com
rennie.com/hansonlu



Jessica Lozada PREC*
604.360.0025
jlozada@rennie.com
rennie.com/jessicalozada

rennie