

7 9211 No. 2 Road, Richmond

\$1,728,000



VERONA GARDEN is a 2 Level luxury duplex-style Townhouse centrally located between Maple Road & Woodward's Road in Richmond. 4 Bedrooms +3 Bathrooms and 1660 sq ft. Features Kraus laminate flooring, 9 ft ceiling on main, double SIDE-BY-SIDE garage, HRV ventilation system for bathrooms and fresh air to living room and bedrooms. The kitchen comes with double quartz countertops & stainless steel kitchen appliances. Bathrooms have designer floor and wall tiles & polished Kohler fixtures. Steps to Jessie Wowk & Daniel Woodward's Elementary School & Steveston London Secondary School. Tenanted, 24hours notice for showing please!

KEY INFORMATION

MLS® R2671922

Residential Attached

Lackner

4 Bedrooms

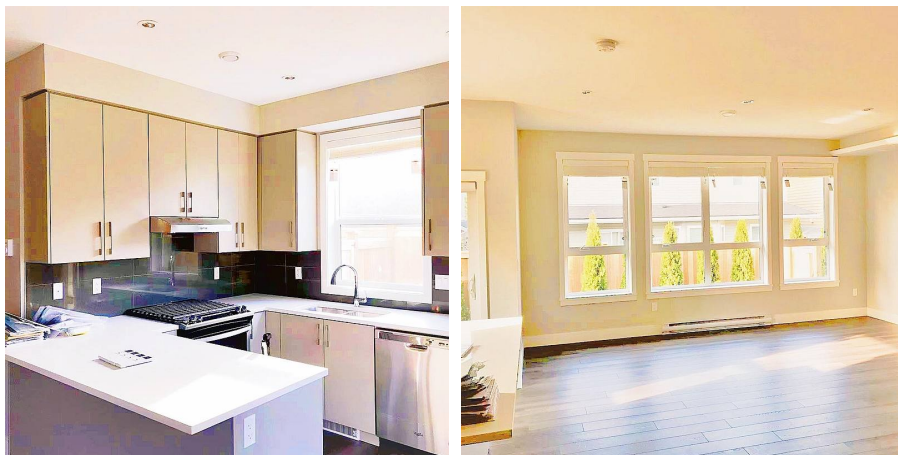
3 Bathrooms

1,660 SF

FEATURES

Year Built: 2017

Listed By: Pacific Evergreen Realty Ltd.



rennie