

3605 2135 Springer Avenue, Burnaby

\$1,124,900



This south-facing corner home on the upper level offers the best of urban living with a spacious floorplan and two bedrooms. Enjoy a large outdoor balcony space and two full baths complete with a rain shower head in the ensuite. Other highlights include premium appliances, smart storage solutions, air conditioning, durable laminate flooring, and high-quality build materials selected for both sleek design and long-lasting durability. Enjoy over 22,000 SF of indoor and outdoor amenity space at SLATE, including The Health Club, social lounge, co-working space, and more. Located within a 5-minute walk to Heidorn SkyTrain Station and 10-minute walk to Brentwood Town Centre. Built by local developer Beedie Living with over 65 years of building experience. Book an appointment today.

KEY INFORMATION

MLS® R2671754

Residential Attached

Brentwood Park

2 Bedrooms

2 Bathrooms

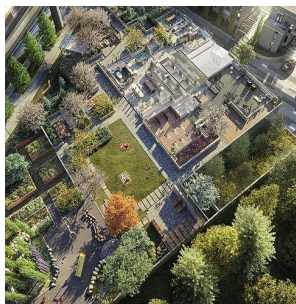
855 SF

\$407.74 Maintenance Fees

FEATURES

Year Built: 2026

Listed By: Beedie Living Realty



rennie