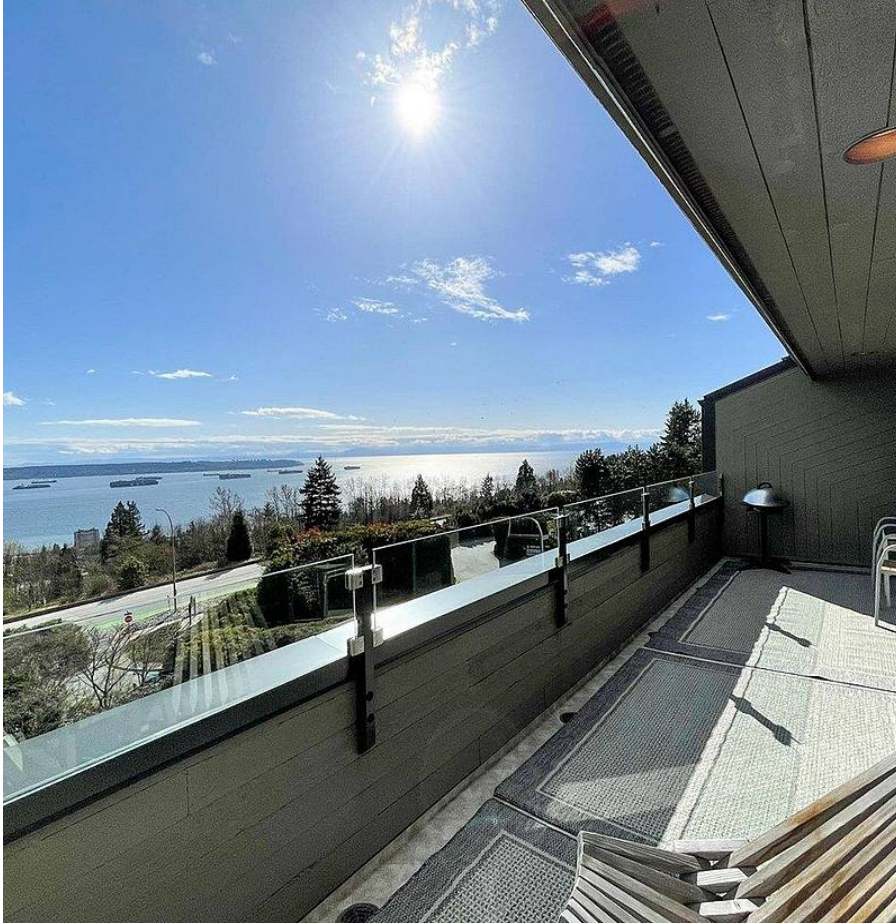


73 2212 Folkestone Way, West Vancouver

\$999,545



Perched high on the North Shore this inviting and elegant penthouse takes in expansive city and ocean views reaching from Mt. Baker to Vancouver Island. The late Fred Hollingsworth's condominium development reflects mid century modern architecture and design. The owners created a peaceful and welcoming atmosphere using materials such as slate countertops, European tiles and fixtures, wide plank oak flooring, radiant heated stone floors and sophisticated Belgian and French wallpapers. This cozy home lends itself to gathering in front of the wood burning fireplace beneath the vaulted ceilings. Minutes to the upper levels and on the road to Whistler for a ski day; an easy commute from this location for those who desire easy access to a world class ski resort!

KEY INFORMATION

MLS® R2672287

Residential Attached

Panorama Village

1 Bedroom

1 Bathroom

947 SF

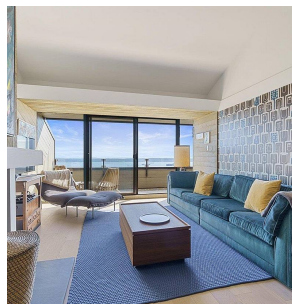
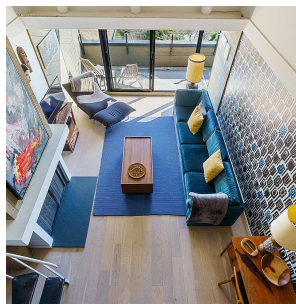
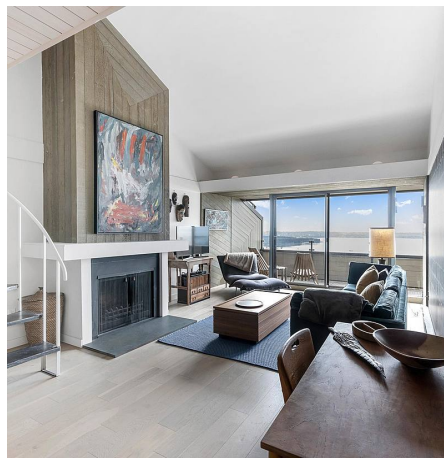
\$591.60 Maintenance Fees

FEATURES

Year Built: 1976

Views: Sweeping ocean and city views

Listed By: RE/MAX Crest Realty



rennie