

627 3563 Ross Drive, Vancouver

\$1,338,000



The Residences at Nobel Park, built by Polygon, it's sitting in a central area of Wesbrook. The Wesbrook Community is well recognized as a tranquil and beautiful environment. This south-west facing penthouse unit is featured with more than just a great view, it also comes with designer appliances, a practical indoor layout, a spacious balcony and one parking stall. It is only steps away from public transportation, shopping areas and restaurants.

KEY INFORMATION

MLS® R2672819

Residential Attached

University

2 Bedrooms

2 Bathrooms

912 SF

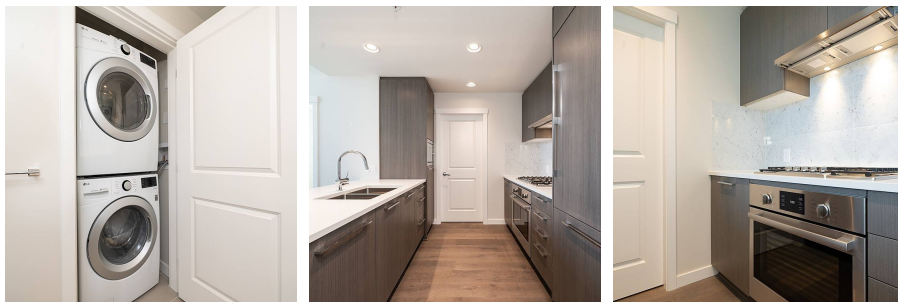
\$323.44 Maintenance Fees

FEATURES

Year Built: 2020

Views: TREE,PARK,WATER

Listed By: LeHomes Realty Premier



rennie