

16 10388 No. 2 Road, Richmond

\$1,799,900



An incredible opportunity to LUXURY townhouse unit at Kingsley Estates by well known developer Polygon! This home features best of living style with 10' ceiling, large windows, spacious living area with the designer finishings eg. custom-made cabinetry, crown molding, crystal lighting collection from RH. A modern kitchen with high-end appliances, entertainment-sized island, and a walking pantry. 4 spacious bedrooms with en-suites make this luxury unit more convenience, comfortable for family. Totals are 4 side by side parking stalls, 2 covered and 2 uncovered. Great location in Woodward neighbourhood next to London Park and close to Centre of Richmond and public transit. Mckinney Elementary and Steveston-London Secondary. Open house Sun (April 17) 2-4pm by appointment.

KEY INFORMATION

MLS® R2672382

Residential Attached

Woodwards

4 Bedrooms

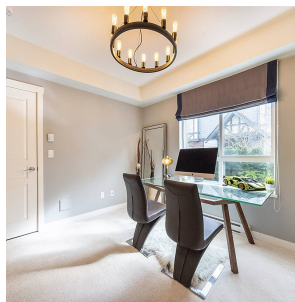
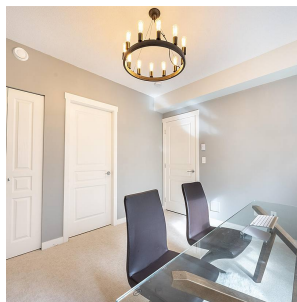
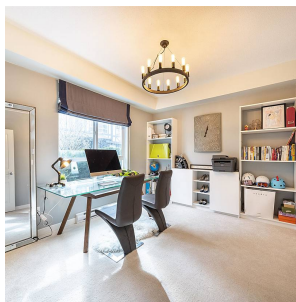
5 Bathrooms

1,969 SF

FEATURES

Year Built: 2016

Listed By: Nu Stream Realty Inc.



rennie