

1603 428 Beach Crescent, Vancouver

\$2,680,000



King's Landing - luxurious upscale waterfront landmark building in Beach Crescent neighbourhood. This 2 bds + Den unit offers views of the parks (George Wainborn and David Lam), Marina, English Bay and Falsecreek water. Hardwood floor through out, 2 parking (EV ready) and extra large storage room. The building has one of the best amenities - 80 Ft indoor pool, hot tub, sauna, steam room. Theater, Billardroom, Fitness Center, Grand party room, roof top deck, guest suites. Beautifully landscaped courtyard. 24 hours Concierge.

KEY INFORMATION

MLS® R2672910

Residential Attached

Yaletown

2 Bedrooms

2 Bathrooms

1,359 SF

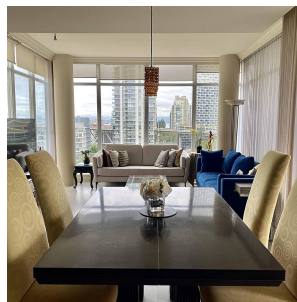
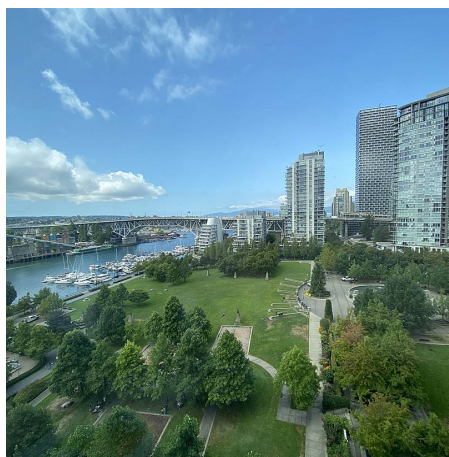
\$1,174.93 Maintenance Fees

FEATURES

Year Built: 2006

Views: water, mountain, park

Listed By: Macdonald Realty



rennie