

1436 Hope Road, Abbotsford

\$4,899,500



2 HOMES on 9.1 Acres. Prime Location (Mt Lehman/Abby Airport). Custom built Main home 5057 SF incl. garage, 7 bedrooms & 6 bath, incl. 2 bed legal suite (separate ground level entry). Large Rec room, spice kitchen, A/C and back up generator. Long Concrete driveway! Second home 2073 SF, 6 bedrooms & 2 bath with private backyard. Separate driveways/access to both homes and field. Room for large or extended families, multiple rental options. Graveled space for RV parking. Blueberry planted with Poles/wires/drip irrigation. FARM STATUS. Close to the Abbotsford Airport, High Street Mall, USA Border and all amenities. Room for your trucks or equipment. Clean and extremely well-maintained property. Must see to appreciate this family friendly cul-de-sac, no flood zone location.

KEY INFORMATION

MLS® R2673110

Residential Detached

Poplar

7 Bedrooms

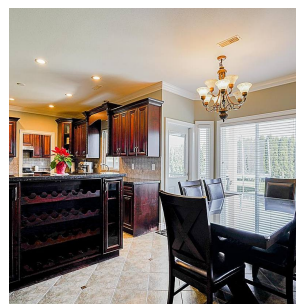
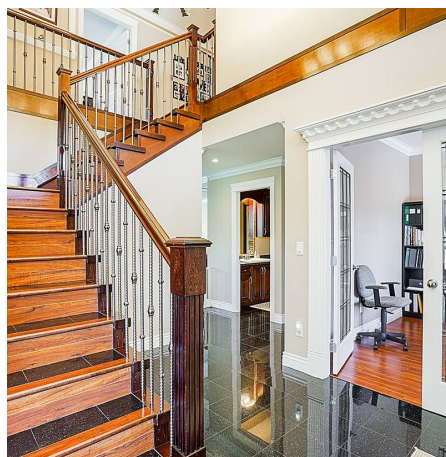
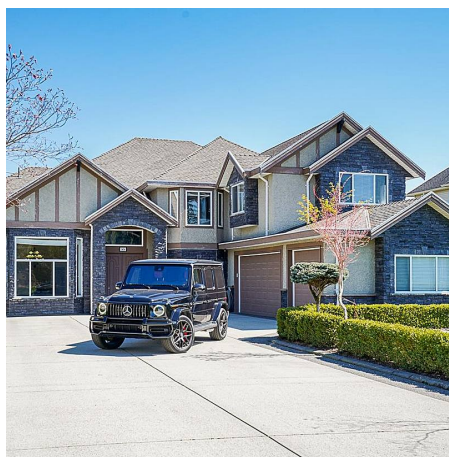
6 Bathrooms

4,434 SF

FEATURES

Year Built: 2007

Listed By: Homelife Benchmark Realty (Langley) Corp.



rennie