

# 1911 140a Street, Surrey

\$2,099,999



Magnificent 2,547 sq ft 5 bedroom, 3 full bathrooms family home located in the Bayridge Elementary and Semiahmoo Secondary (IB Program) school catchments. This house had many updates throughout with a great floor plan. The spacious kitchen, equipped with professional grade appliances and a large island is a chef's dream opening to the sun filled family room full of natural light and a gorgeous backyard view. The master bedroom is spacious with a fabulous spa inspired ensuite accompanied by three additional bedrooms on the upper floor. At the end of the day, go for a stroll to the beach or the Pier. Everything is nearby from beaches, shopping, entertainment, and abundance of recreational facilities. This is truly is a remarkable family home!

## KEY INFORMATION

MLS® R2672390

Residential Detached

Sunnyside Park

5 Bedrooms

3 Bathrooms

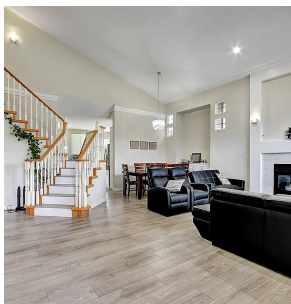
2,547 SF

6,546 SF Lot

## FEATURES

Year Built: 1997

Listed By: YPA Your Property Agent



rennie