

# 1209 5788 Gilbert Road, Richmond

\$999,900



CASCADE CITY by Landa Global is designed by renowned Rafii Architects & Arno Matis. This 2 bdr 2 Bath south facing unit has bright open layout, over-size cover balcony and floor to ceiling windows, A/C, Miele appliance package and engineered hardwood floors throughout. Very thoughtful layout and it feels big than its square footage. Walking distance to many restaurants, Richmond Centre, Aberdeen Centre, and skytrain stations. Amenities incl. exclusive 3,000sf double-height fitness centre, guest suite, multifunctional club lounge, lushly landscaped 25,000sf podium-level outdoor space. 1 Parking + 1 Bike Locker. Open house April 9, Sat, 2-4pm

## KEY INFORMATION

MLS® R2673537

Residential Attached

Brighthouse

2 Bedrooms

2 Bathrooms

760 SF

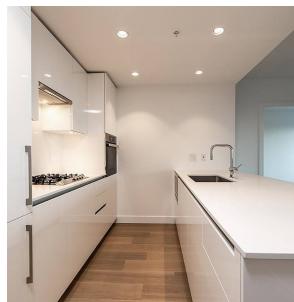
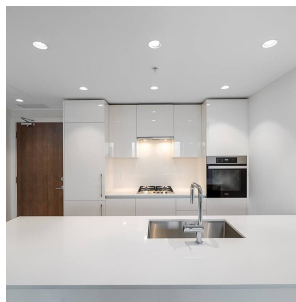
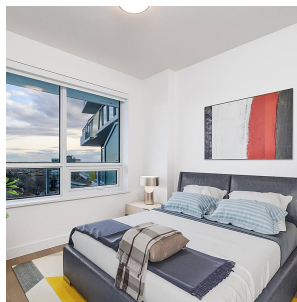
\$422.60 Maintenance Fees

## FEATURES

Year Built: 2022

Views: City

Listed By: Jovi Realty (Richmond) Inc.



rennie