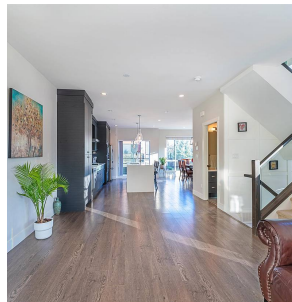
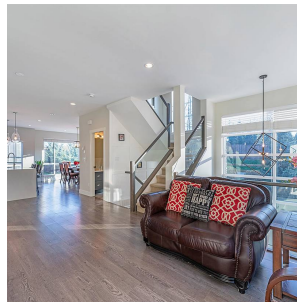
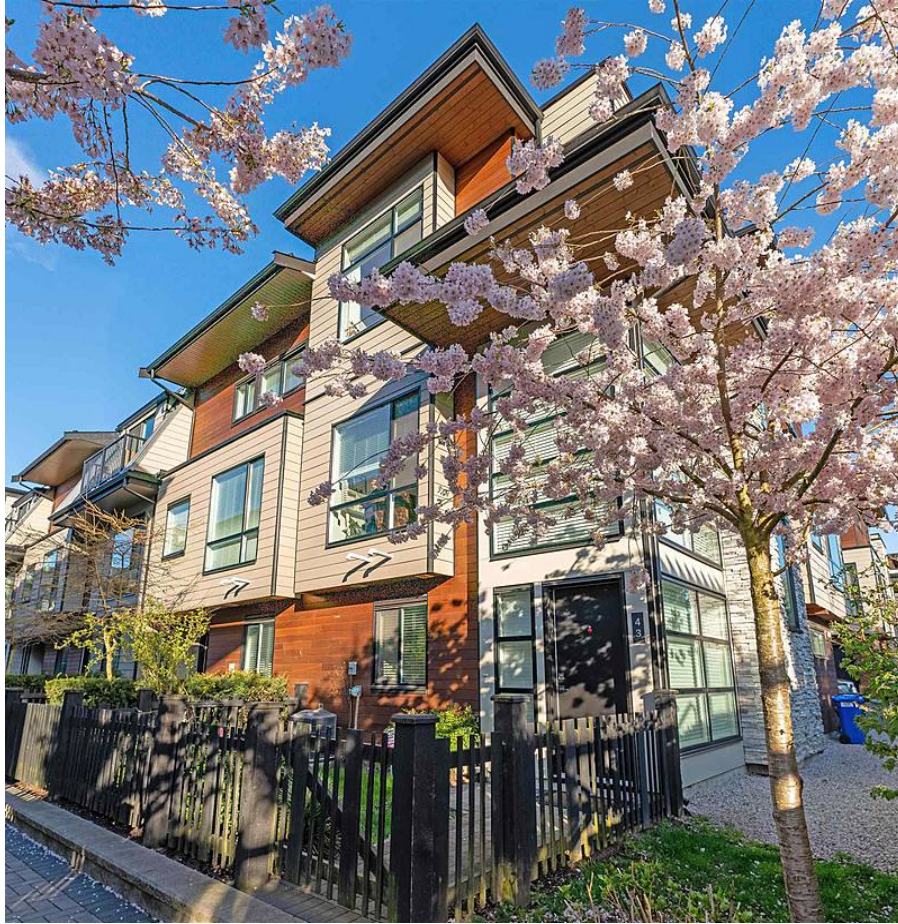


43 15688 28 Avenue, Surrey

\$1,188,000



RARE 4 bedrooms & 4 bathrooms, Spacious and modern luxury corner unit townhouse in SAKURA, central location in popular GRANDVIEW! House style layout with double high foyer and full height windows from floor to ceiling. Open concept Living, Dining and south facing family area & Kitchen with 4 Burner Gas Stove top, high end cabinets and stainless appliances. Master bedroom with 11' high ceilings, walk in closet and ensuite with radiant heating floor, front load washer/dryer, Air conditioning, B/I security and central vacuum, H/W on demand, double side by side garage. One bright bedroom with ensuite above the ground level. Steps to Grandview Corner Shops, restaurants and recreation, Steps away from top Private school- Southridge, Sunnyside Elementary and new Grandview Heights Secondary.

KEY INFORMATION

MLS® R2673309

Residential Attached

Grandview Surrey

4 Bedrooms

4 Bathrooms

1,862 SF

FEATURES

Year Built: 2016

Listed By: Saba Realty Ltd.

rennie