

# 46423 Maple Avenue, Chilliwack

\$949,900



Welcome to Maple Avenue! This 2500+ square foot home has a large fenced back yard with a covered patio, garden beds, and room for a pool. Inside the home you will find almost every surface has been redone. Enter to see a cozy living area with a fantastic fire place, dining area and a beautiful kitchen with lots of cupboard space. This home has 3 bedrooms upstairs and 2 bedrooms down, equipped with a charming basement suite and lots of parking. Located on a quiet side street that is close to shopping and restaurants, this is the perfect place to call home!

## KEY INFORMATION

MLS® R2673198

Residential Detached

Chilliwack

5 Bedrooms

2 Bathrooms

2,544 SF

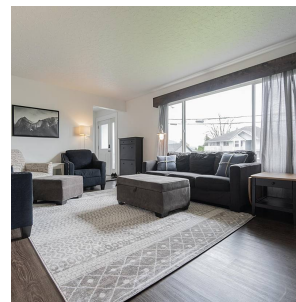
7,000 SF Lot



## FEATURES

Year Built: 1967

Listed By: HomeLife Advantage Realty Ltd



rennie