

14 5945 176a Street, Surrey

\$948,998



Welcome to the desirable CRIMSON complex, located in the heart of charming Cloverdale! STUNNING modern farmhouse inspired 3 storey townhome is BRIGHT and beautifully maintained, boasting 3 bedrooms PLUS DEN, 3 bathrooms and almost 1500 square feet of living space. The well thought-out design is functional & open, incl. large kitchen w/ high-end s/s appliances incl. gas range & built-in micro, as well as huge island w/ breakfast bar. Spacious bedrooms incl. master w/ WIC & double sinks in ensuite. LARGE BALCONY off the kitchen! Bonus FORCED AIR heating & side by side DOUBLE GARAGE. Family oriented neighbourhood close to schools, dining, shopping, parks & more! Call to arrange your private viewing today!

KEY INFORMATION

MLS® R2673689

Residential Attached

Cloverdale

3 Bedrooms

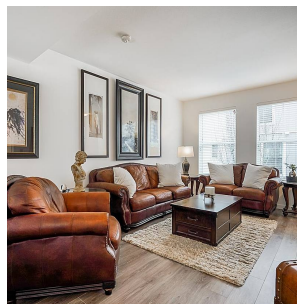
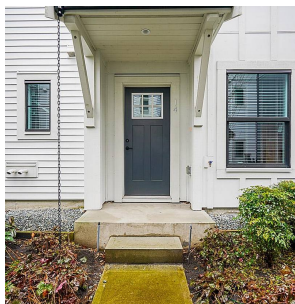
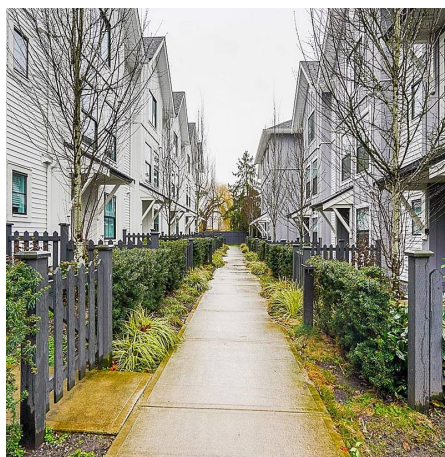
3 Bathrooms

1,446 SF

FEATURES

Year Built: 2019

Listed By: RE/MAX Treeland Realty



rennie