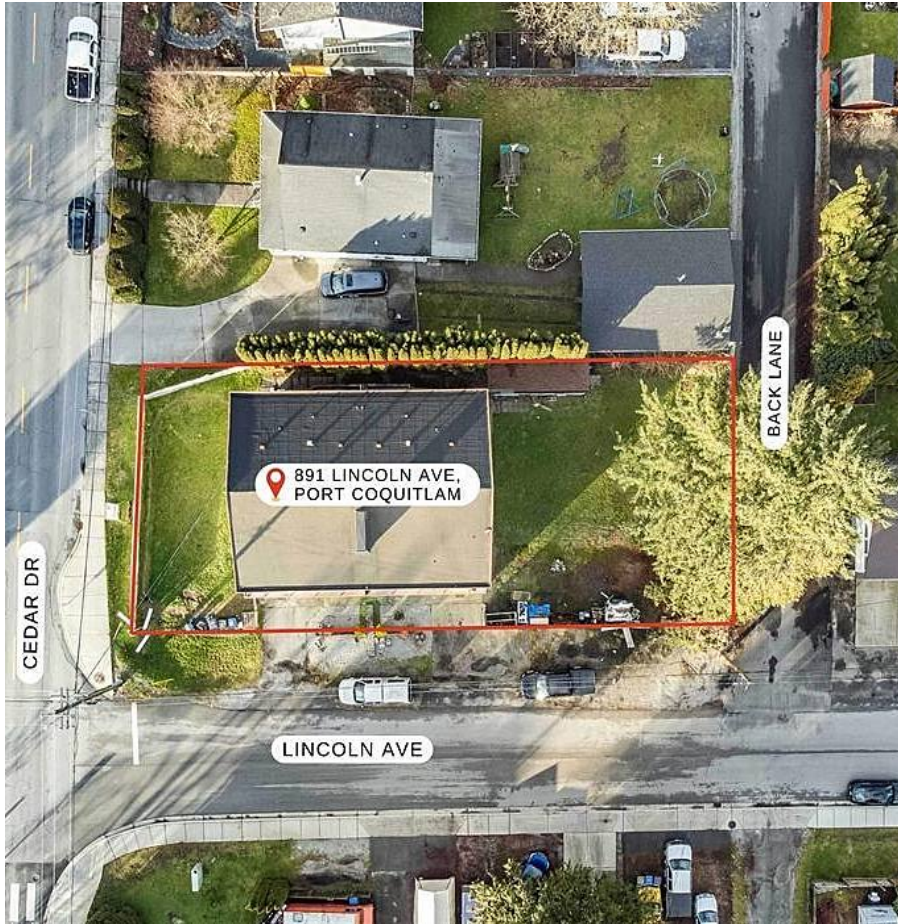


891-893 Lincoln Avenue, Port Coquitlam

\$2,288,888



INVESTOR ALERT!! INVESTOR ALERT!!
Amazing well maintained full 4-plex situated in the heart of Port Coquitlam. The 4-plex offers two, 3-bedroom units upstairs, and two, 2 bedroom suites downstairs, with 1 car garage on each side. Partial updates include, but are not limited to, kitchens, flooring and painting in the multiple units. New Front and Back Decks. Excellent monthly rental income of approximately \$6000.00, units are tenanted, tenants would like to stay. The Development Potential on this huge 9933 SF Lot is endless. Walking distance to schools, Transit, Hiking and walking trails. Come Quick before its gone!!

KEY INFORMATION

MLS® R2673730

Residential Detached

Lincoln Park

10 Bedrooms

4 Bathrooms

3,488 SF

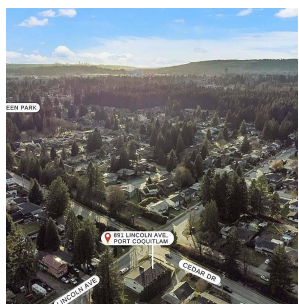
9,933 SF Lot

FEATURES

Year Built: 1967

Views: Mountains

Listed By: RE/MAX Blueprint Realty



rennie