

17303 59a Avenue, Surrey

\$1,599,000



Excellent Cloverdale location! This pristine split level home is meticulously maintained and is situated on a large 8934 SQFT LOT. COMPLETELY RENOVATED in 2014 featuring new windows, updated bathrooms, paint floors and light fixtures throughout, new gas fireplace insert with gorgeous custom mantle, updated kitchen cabinets, backsplash, countertops & appliances. PLUS new roof, garage doors & detached workshop w/power all done in 2016. AND new hot water tank & exterior of home just painted this fall!! A/C for those hot summer days & loads of parking incl. a spacious dbl garage w/drive through access to the backyard. Large private yard w/garden beds, concrete patio, workshop & pond/water feature. Family friendly streets, steps from transit, parks, George Greenway Elementary & Hwy access.

KEY INFORMATION

MLS® R2673987

Residential Detached

Cloverdale

3 Bedrooms

3 Bathrooms

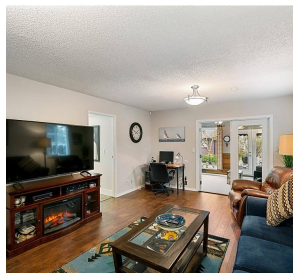
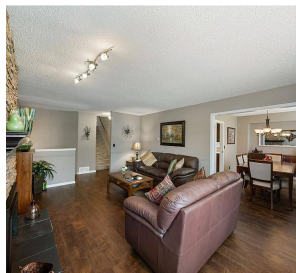
2,107 SF

8,934 SF Lot

FEATURES

Year Built: 1981

Listed By: Sutton Group Seafair Realty



rennie