

606 814 Royal Avenue, New Westminster

\$659,000



A beautiful Northeast corner unit with the view of River and the City with lots of natural light. Very functional 795 sq.ft floor plan features 2 bed 2 bath plus 1 den, open concept living, oversized windows, and a large covered balcony. Amenities include private garden, exercise room, playground and visitors parking. Comes with 1 Parking Stalls and 1 Storage. Kitchen has S/S appliances and granite counters and close to all amenities including the skytrain

KEY INFORMATION

MLS® R2674127

Residential Attached

Downtown

2 Bedrooms

2 Bathrooms

795 SF

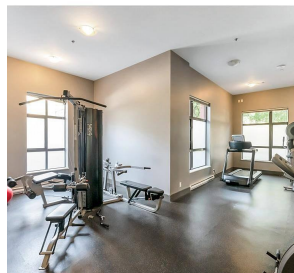
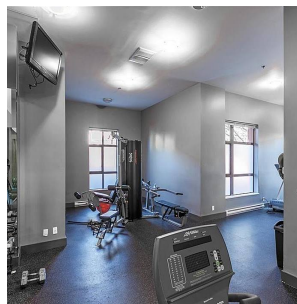
\$423.85 Maintenance Fees

FEATURES

Year Built: 2007

Views: Water

Listed By: Royal Pacific Realty Corp.



rennie