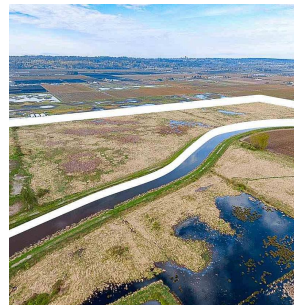
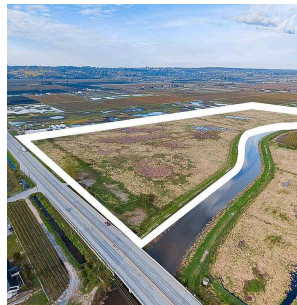
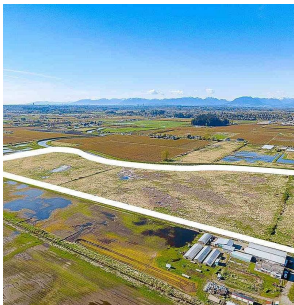
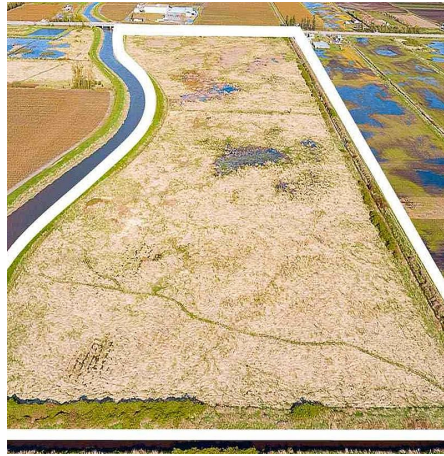
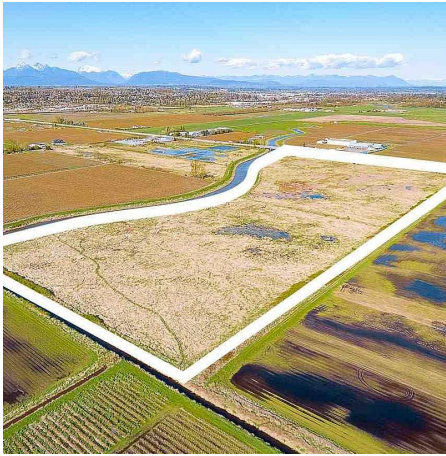


4441 176 Street, Surrey

\$6,990,111



One of a kind! 56.7 acres parcel with 1,295 feet of frontage stretching Pacific Highway! (aka Hwy 15 and 176 Street.) Fertile soil to grow all various crops, Blueberry, Vegetables, Nursery, and Greenhouse Facility. Take advantage of this high exposure, high traffic location with 1181 feet of Highway #15 frontage to start a retail agricultural business. Also a great location to build your dream home, close to Morgan Creek Golf Course. Close to all major Shopping Centers, Schools and Entertainment. Make your move fast and be one of the few to own one ever lasting gems. On City Water. Easy access to Highway #15, Highway #1, USA border, and Hwy #10. ALL MEASUREMENTS ARE APPROXIMATE.

KEY INFORMATION

MLS® R2673039

Land Only

Serpentine

0 Bedrooms

0 Bathrooms

0 SF

FEATURES

Listed By: Gilco Real Estate Services