

# 2688 Crescent Drive, Surrey

\$4,750,000



Crescent Heights Estate. Beautiful 5,665 sq. feet. 2 story + basement , on park-like 28,904 sqft. property. Surrey's most charming neighborhood w/ multi million dollar homes above Crescent Beach. Extensive high quality renos completed 2016. Private setting w/mature trees & terraced gardens west facing back yard. Fully fenced. Four large bedrooms all w/walk in closets. Lovely master suite w/gas fireplace and a lux en-suite. Well designed kitchen w/High end appliances leads to eating area looking at pond & garden. Spacious family rm w/wd burning fireplace. Well lit main rms for comfortable living. West facing full sized heated pool & trex deck great for entertaining. Ample parking & Dbl Garage . Steps away from the trail leading to Crescent Beach .Schools: Crescent Park Elem/Elgin Sec. .

## KEY INFORMATION

MLS® R2673581

Residential Detached

Crescent Beach

4 Bedrooms

4 Bathrooms

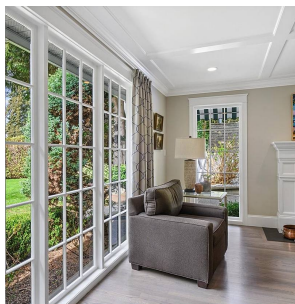
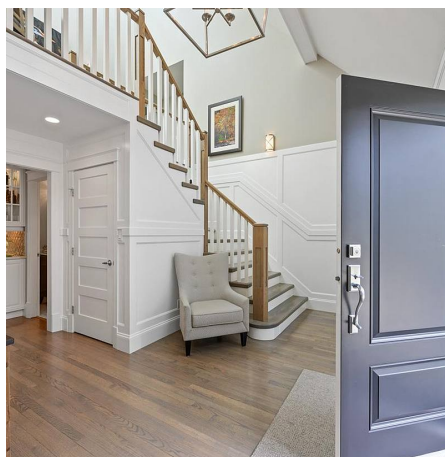
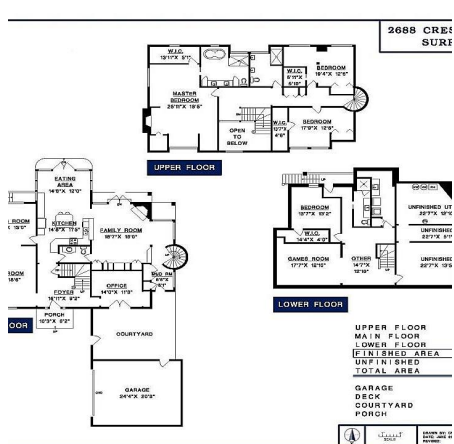
5,665 SF

28,904 SF Lot

## FEATURES

Year Built: 1980

Listed By: Hugh & McKinnon Realty Ltd.



rennie