

# 5915 Keith Street, Burnaby

\$1,898,000



INVESTORS and BUILDERS alert. Your search is over with this perfect South Slope corner lot 65 x 106 on the HIGH SIDE of the street with back lane. Excellent investment. Easily rentable or hold for later to build approx 4500 sq ft 3 level dream home with views overlooking Richmond. Freshly painted through and move in ready. Newer furnace, 2 bedrooms up , 1 bdrm in lower level and fully finished. With Burnaby's future plans - potential property for future laneway home. Buyer or Buyer's agent to do their own due diligence regarding status of future laneway program and potential. Close to shopping, transit, parks and Clinton Elementary and Glenwood Elementary.

## KEY INFORMATION

MLS® R2674565

Residential Detached

South Slope

3 Bedrooms

2 Bathrooms

1,400 SF

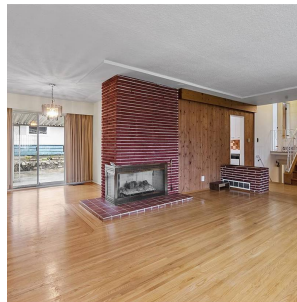
6,890 SF Lot

## FEATURES

Year Built: 1953

Views: City

Listed By: Sutton Centre Realty



rennie