

117 18818 68 Avenue, Surrey

\$625,000



Rarely available ground floor unit at Calera. This centrally located 2 bed/2 bath condo boasts an amazing outdoor space, including a 17' x 14' patio and 2 garden areas, with access from the back door. Light and bright with large windows and 10 foot ceilings. Kitchen offers tons of storage, stainless appliances and a center island. Massive club house with private access to a beautiful inside courtyard. Walk to Hazelgrove Elementary, Clayton Secondary, Hillcrest Shopping Ctr, Save On Foods. Clayton off leash dog park is just a couple of minutes away. One block from the future sky train station! Don't delay!!

KEY INFORMATION

MLS® R2674451

Residential Attached

Clayton

2 Bedrooms

2 Bathrooms

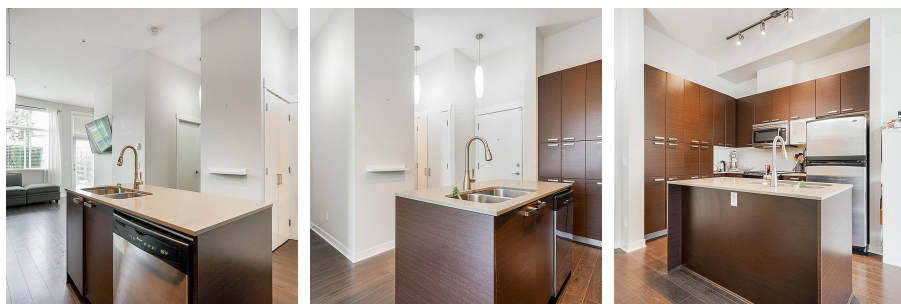
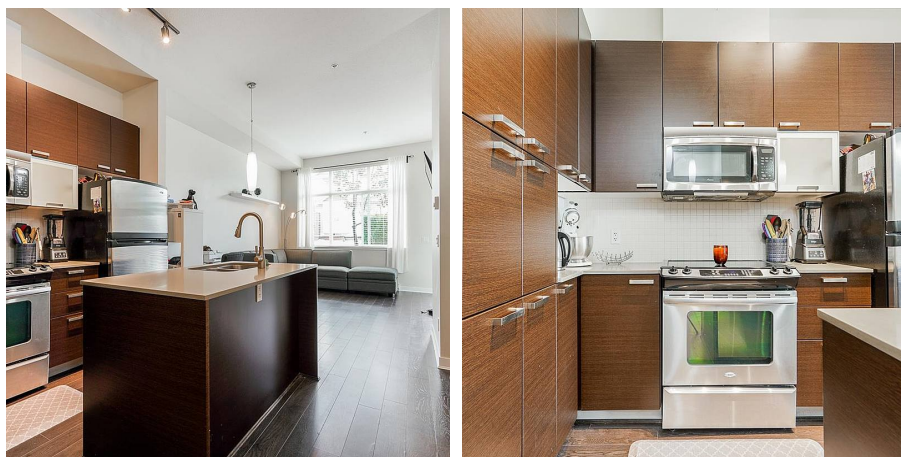
767 SF

\$213.72 Maintenance Fees

FEATURES

Year Built: 2010

Listed By: RE/MAX Treeland Realty



rennie