

125 3455 Wright Street, Abbotsford

\$649,900



Great family-oriented and pet-friendly townhouse in East Abbotsford! This beautiful end-unit townhome is located in the desirable Laburnum Mews complex, with a fabulous location near great schools, (private and public), an off-leash dog park, and Stoney Creek. This home has a fantastic layout with an open-plan kitchen that overlooks the huge living room with vaulted cedar ceilings. Patio doors lead to a very large treed fully-fenced, south-facing, and private backyard. Enjoy the clubhouse, play court, and space for two cars. No age rest & pets of all sizes allowed. A must to see! Only Private showings.

KEY INFORMATION

MLS® R2674533

Residential Attached

Abbotsford East

3 Bedrooms

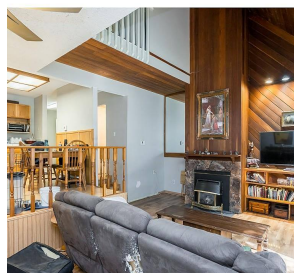
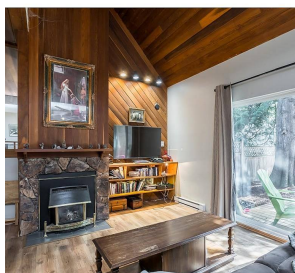
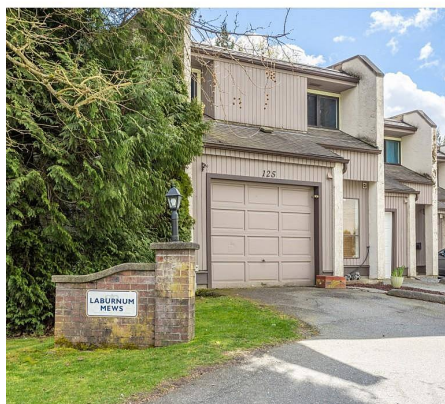
2 Bathrooms

1,605 SF

FEATURES

Year Built: 1979

Listed By: eXp Realty (Branch)



rennie