

3907 4510 Halifax Way, Burnaby

\$950,000



Live above the clouds at Shape Properties' Amazing Brentwood with its enthralling panoramic Southwest corner unit view! Lavish open kitchen lifestyle with quartz countertop, marble backsplashes and Bosch appliances. Plenty of space with its 2 BD + 2 BA + Den orientation. Square layout to minimize wasted space. Walk-in closet with enough space to handle plenty of clothes. 1 locker and 1 parking included. 24/7 concierge and tons amenities including fitness centre, yoga & meditation room, lounge area, meeting rooms and guest suits. Children's play area for the kids and nearby Rec Room Brentwood for the adults. Can't ask for anything more! Book your viewing today.

KEY INFORMATION

MLS® R2674442

Residential Attached

Brentwood Park

2 Bedrooms

2 Bathrooms

905 SF

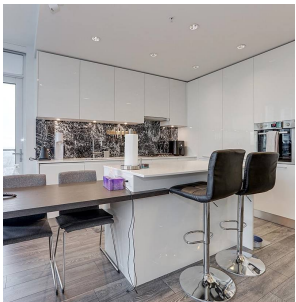
\$513.38 Maintenance Fees

FEATURES

Year Built: 2019

Views: Panoramic: North, West, South

Listed By: Jovi Realty Inc.



rennie