

# 9000 Mccutcheon Place, Richmond

\$2,788,000



Custom built, top quality gorgeous home!  
Beautiful and owner well-cared custom home sitting on a 8139 sqft corner lot located in the very popular Broadmoor area of Richmond. This quality home features almost 3700 sqft of spacious living, bright double-height foyer & living room, gourmet kitchen with a large center island, work kitchen, one bedroom ensuite on main, radiant floor heating & gas fireplace. Upstairs with 5 bedrooms, all ensuites. Fenced private south-facing yard, 3 cars attached garage. Close to Errington Elementary & Stevenston-London Secondary Catchments.

## KEY INFORMATION

MLS® R2675057

Residential Detached

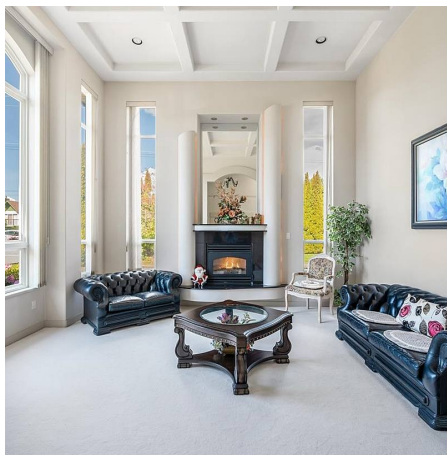
Broadmoor

6 Bedrooms

5 Bathrooms

3,696 SF

8,139 SF Lot



## FEATURES

Year Built: 1997

Listed By: Laboutique Realty

