

604 5987 Wilson Avenue, Burnaby

\$1,085,900



Central Park House, Bosa Properties newest offering from The Bosa Properties Collection is set to become a landmark at the gateway to Vancouver & Metrotown. Located 1 block east of Burnaby's largest urban park, Central Park, this striking, 41-storey tower was designed by Gensler, a world-renowned architecture firm. Residences are enclosed with an energy-efficient curtain wall & floor-to-ceiling glass windows. 15,000 sf of indoor & outdoor amenity space. Multi-level amenity pavilion has 2,000sf fitness centre, with views of the park & cityscape, lounge with pool table, catering kitchen, Indoor Heated Lap Pool, Hot Tub, his & hers sauna & steam room, wellness studio. 24-hour concierge/security service, parcel room & lounge seating surrounded by a bamboo garden. Measurements are approximate.

KEY INFORMATION

MLS® R2675007

Residential Attached

Metrotown

2 Bedrooms

2 Bathrooms

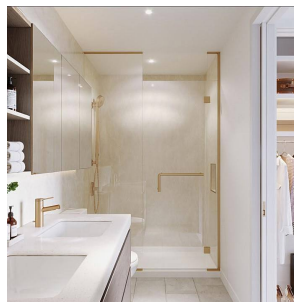
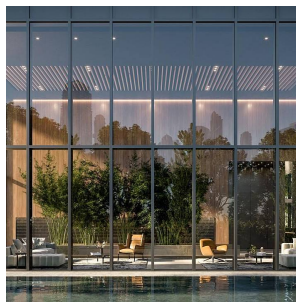
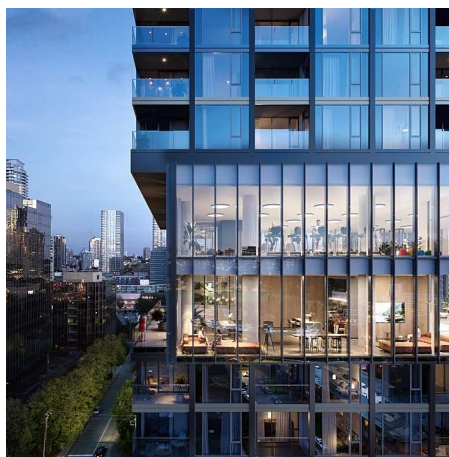
823 SF

\$452.65 Maintenance Fees

FEATURES

Year Built: 2025

Listed By: Bosa Properties Realty Inc.



rennie