

1505 2355 Madison Avenue, Burnaby

\$659,000



Fantastic 1 bedroom & den suite on the 15th floor at the sought after Oma! This quiet north facing unit features extra high 9' ceilings, an open plan layout, floor to ceiling windows & a spacious 110 SF covered patio for BBQing & enjoying the sun. The kitchen comes with granite countertops, breakfast bar & SS appls. Access to the great amenities in the bldg including gym, pool, sauna, hot tub, party room & roof top gardens. Fabulous central location just steps to Brentwood Town Centre & Gilmore Skytrain Station. Ride to downtown in 20 mins. Balance of warranty along with 1 secured parking & storage locker included. Terrific investment property too. This one won't last, call today! Showing by appointment, 24 hours notice.

KEY INFORMATION

MLS® R2675392

Residential Attached

Brentwood Park

1 Bedroom

1 Bathroom

647 SF

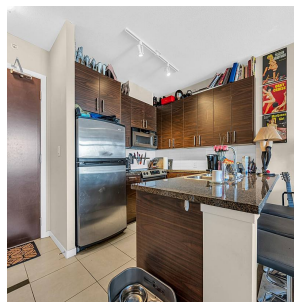
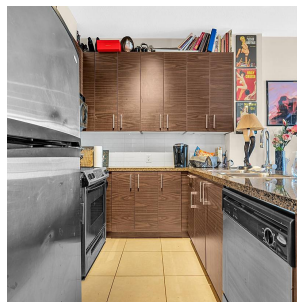
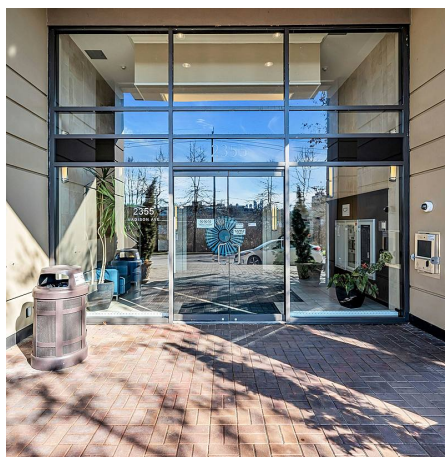
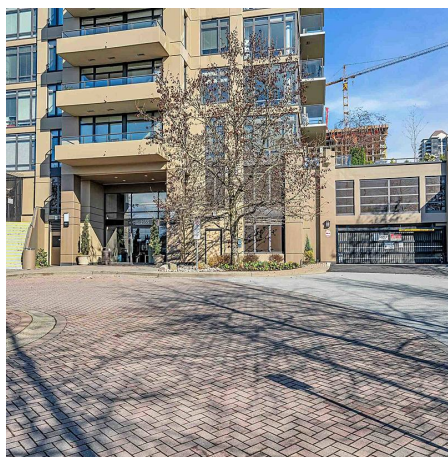
\$307.28 Maintenance Fees

FEATURES

Year Built: 2007

Views: NORTSHORE MOUNTAINS

Listed By: Keller Williams Realty VanCentral



rennie