

1503 485 W 42nd Avenue, Vancouver

\$1,768,000



Enjoy executive-style living at Polygon's Claridge House. There are only 6 residences on each floor, and this coveted northeast-facing corner home shines with sophisticated interiors, thoughtful designer details and beautiful amenities. Enjoy a redeveloped Oakridge shopping mall right across the street, featuring over 300 trendiest shops and eateries. Acres of urban parks are also steps away in addition the Queen Elizabeth Park and Van Dusen Garden. Commute is a breeze with the Canada Line just one crosswalk away. A dedicated parking stall is also included. Book an appointment today to visit us at 498 West 41st Ave

KEY INFORMATION

MLS® R2675512

Residential Attached

Oakridge

2 Bedrooms

2 Bathrooms

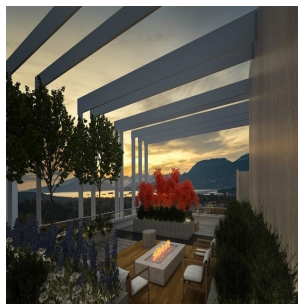
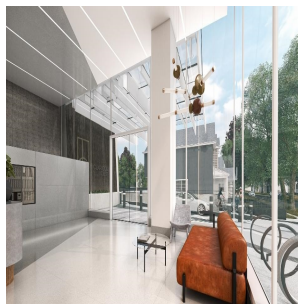
1,005 SF

\$588.47 Maintenance Fees

FEATURES

Year Built: 2025

Listed By: Polygon Realty Limited



rennie