

1911 908 Quayside Drive, New Westminster

\$718,000



Highly sought after Riversky 1 by Bosa along the iconic New Westminster Quay. Scenic Fraser River and city views on the 19th floor throughout the entire day. Spacious living and dining space that you seldom get with newer buildings as well as plenty of windows, making this truly a worthwhile home for personal living or a great place that tenants will enjoy. Like new unit featuring engineered hardwood flooring, quartz counters, and integrated appliances giving this kitchen a modern and clean look. Bonus: upgraded kitchen island with a table extension(ExtendTable), one of Bosa's signature features! Building is connected to New West Station via a skybridge! Rentals and pets ok, and front desk concierge will hold parcels! 1 Parking and 1 Locker. Rented to amazing tenants for \$2,333/month.

KEY INFORMATION

MLS® R2675533

Residential Attached

Quay

2 Bedrooms

1 Bathroom

757 SF

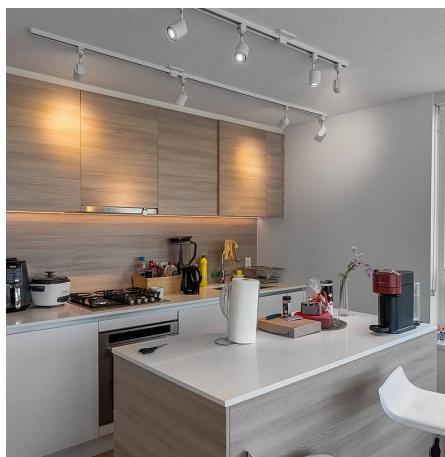
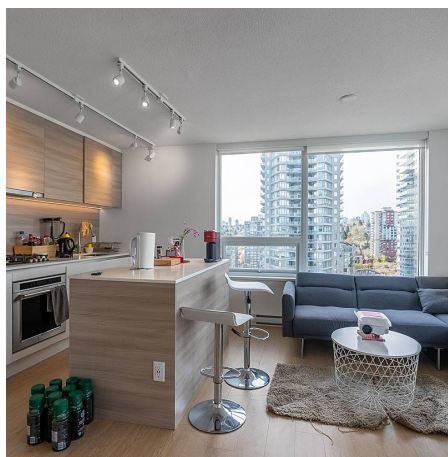
\$428.88 Maintenance Fees

FEATURES

Year Built: 2019

Views: River View

Listed By: Jovi Realty (Richmond) Inc.



rennie