

# 23401 118 Avenue, Maple Ridge

\$1,125,000



Location, Location, Location!! Centrally located and properly maintained UPDATED RANCHER only minutes away from downtown Maple Ridge and walking distance to Thomas Haney Secondary School and Golden Ears Elementary School. Updated Maple kitchen & tile floors with stainless steel appliances. Both bathrooms have been recently renovated. Home includes central A/C and WOOD FIREPLACE. Newer furnace and 2 year old hot water tank. Brand new Garage Door. Enjoy the large PRIVATE backyard that comes equipped with a large jacuzzi with brand NEW COVER, covered patio, sun patio, garden beds, shed, and large hedges. CONVENIENCE! The backyard has its own gas hook up so you will NEVER run out of gas for your BBQ. RV PARKING option with access to the backyard. This rancher is ideal for a growing family.

## KEY INFORMATION

MLS® R2675663

Residential Detached

Cottonwood

3 Bedrooms

2 Bathrooms

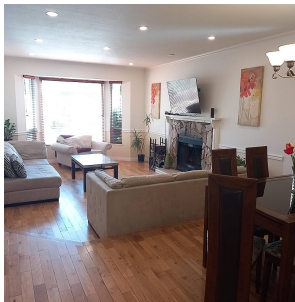
1,270 SF

5,998 SF Lot

## FEATURES

Year Built: 1986

Listed By: Royal LePage - Wolstencroft



rennie