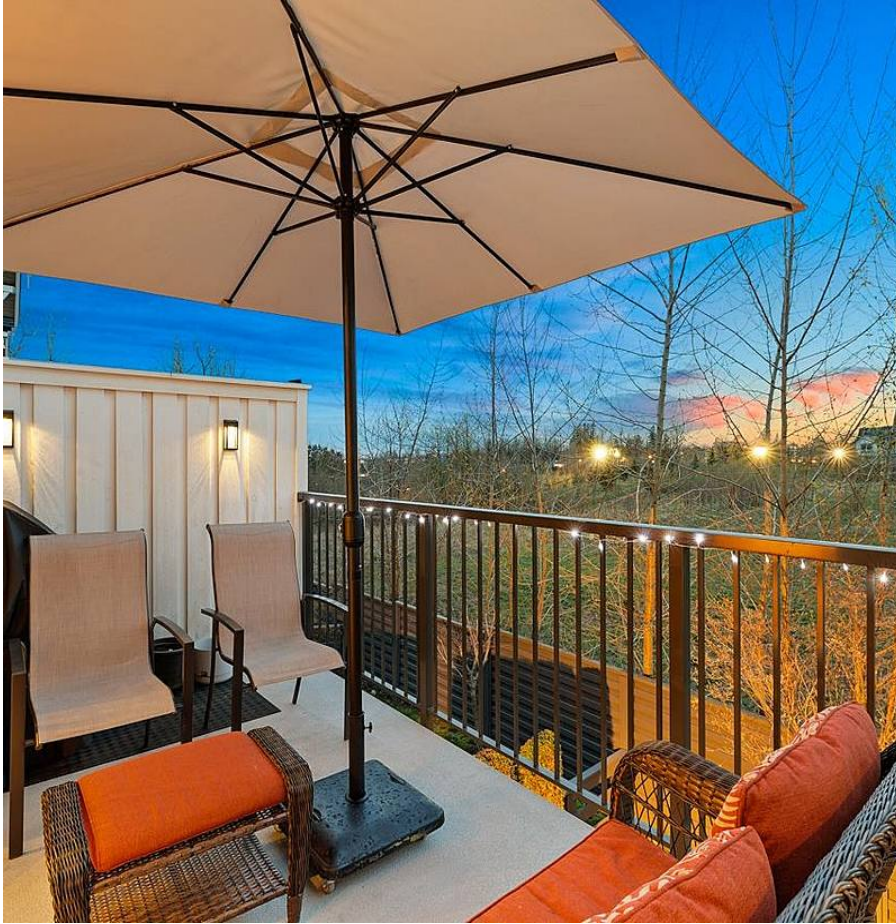


73 31032 Westridge Place, Abbotsford

\$739,990



Beautiful family townhouse in Harvest at WESTERLEIGH! This two bedroom home has a flexible open layout with large windows and light paint colours. Enjoy the modern kitchen featuring laminate wood floors, granite counter tops, flat panel cabinetry, stainless steel appliances and sliding doors to your private deck with peaceful GREEN BELT VIEWS overlooking your private, fully-fenced yard. Upstairs has two large bedrooms, including the master with spa-inspired ensuite with double sinks and large walk-in shower. Every Westerleigh resident has access to CLUB WEST, Westerleigh's resort-style private clubhouse with fitness studio, fireside lounge, hockey room, theatre and outdoor pool & hot tub. Don't miss out on this perfect family home, call today to book your private tour!

KEY INFORMATION

MLS® R2675048

Residential Attached

Abbotsford West

2 Bedrooms

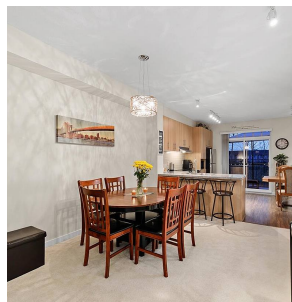
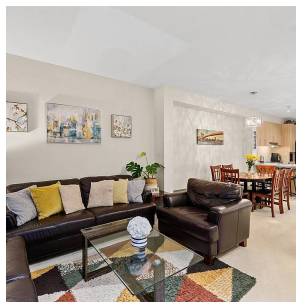
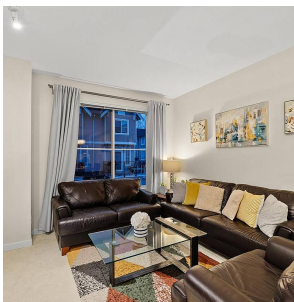
2 Bathrooms

1,320 SF

FEATURES

Year Built: 2014

Listed By: eXp Realty (Branch)



rennie