

101 22230 North Avenue, Maple Ridge

\$489,000



Welcome to your new home at "Southridge Terrace". This spacious and bright two bedroom, two bathroom PLUS DEN boast over 1090 square feet of living space. Unit located on the quiet side of the building side of the building. The spacious open floor plan features a gas fireplace, formal dining, large kitchen with loads of countertop space, in-suite laundry with storage. The open floor concept makes the home great for entertainers. The added den takes you out on to the street as well, makes it feel like a townhouse. Pet restrictions: up to 2 caged birds, 1 dog or 1 cat; max dog height when fully grown 16 inches at the shoulder.

KEY INFORMATION

MLS® R2675155

Residential Attached

West Central

2 Bedrooms

2 Bathrooms

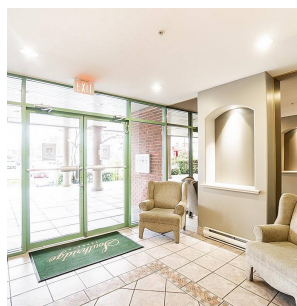
1,090 SF

\$451.16 Maintenance Fees

FEATURES

Year Built: 1999

Listed By: Sutton Premier Realty



rennie