

5889 148a Street, Surrey

\$1,499,800



Built by Morningstar and situated in the heart of Sullivan Station, this amazing well-kept 4 Bedroom, 4 Bath, 2300+sft family home has tons to offer for the growing family. The main floor has a fully functional layout with an open concept kitchen complete with pantry and a center island. Through the back, we have the mudroom w/ laundry for your dirty clothes as you come home, and a powder room for convenience. Upstairs has 3 large bedrooms and a massive walk-in closet in the Master, as well as a large soaker in the ensuite. Downstairs is a large 1 bedroom self-contained mortgage helper with separate laundry. A short walk to Goldstone Park. Cambridge Elementary and Sullivan Secondary school catchments. Showings by Appointment.

KEY INFORMATION

MLS® R2675874

Residential Detached

Sullivan Station

4 Bedrooms

4 Bathrooms

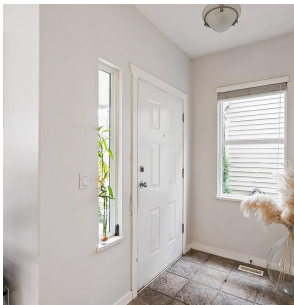
2,345 SF

2,744 SF Lot

FEATURES

Year Built: 2003

Listed By: Stonehaus Realty Corp.



rennie