

37 4217 Old Clayburn Road, Abbotsford

\$1,399,999



Welcome to Sunset Ridge! Located in the heart of East Abbotsford in one of the most desired neighborhoods. Titan Key Developments has an amazing reputation for high-quality built homes. This beautiful modern home is the perfect for a new family with a walkout basement with all the bells and whistles. Modern Craftsman & Modern Prairie Style architecture with beautiful color schemes. The kitchens will feature large islands, quartz countertops, solid wood cabinetry with under cabinet lighting. The home will be incredibly efficient with a tankless water heater & digital thermostats. Walking distance to all levels of schools. The projected move-in date for will be end of June 2022. Don't wait be apart of this wonderful gated community!

KEY INFORMATION

MLS® R2675893

Residential Detached

Abbotsford East

3 Bedrooms

4 Bathrooms

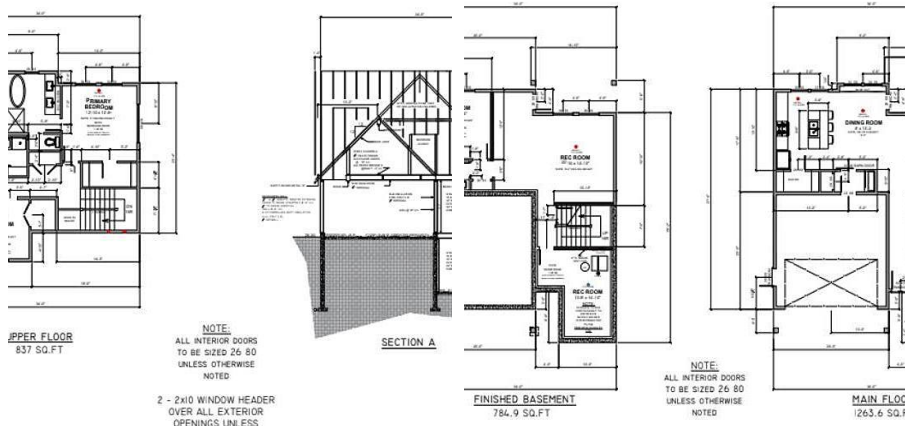
2,885 SF

3,233 SF Lot

FEATURES

Year Built: 2022

Listed By: Sutton Group-West Coast Realty (Abbotsford)



rennie