

# 808 8120 Lansdowne Road, Richmond

\$758,000



Welcome to the elegant PRADO- the stunning landmark in the heart of downtown Richmond! This one-of-a-kind concrete high-rise building is quality built by APPIA, the family of most reputable BOSA development. Spacious and great layout. Perfect finish with high-end appliances & Caesar stone counter top. Huge garden with well-equipped amenities. Best location in Richmond. Walk to SkyTrain & bus station, Lansdowne Mall, Save-On Food & Kwantlen University. Excellent amenities, gym, steam sauna, guest suite, 2 side by side parking. Renovated in 2020, new paint, new carpet and new lights.

## KEY INFORMATION

MLS® R2676028

Residential Attached

Brighthouse

2 Bedrooms

2 Bathrooms

941 SF

\$445.72 Maintenance Fees

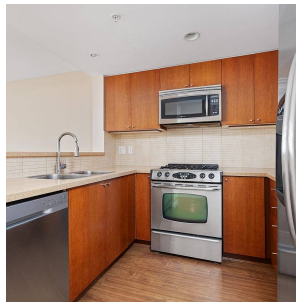


## FEATURES

Year Built: 2009

Views: Mountain & City

Listed By: RE/MAX Westcoast



rennie