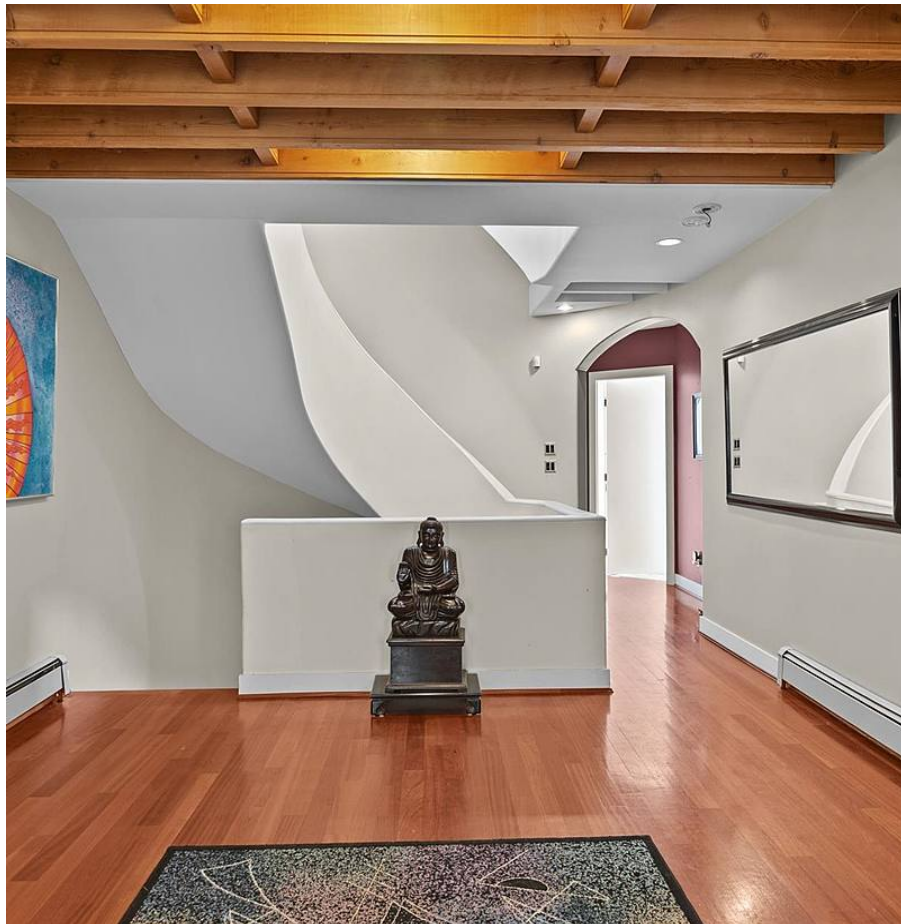


1258 Coleman Close, North Vancouver

\$3,088,000



ATTENTION FAMILIES WITH TEENS-the perfect home! Welcome to this spacious, light filled beauty sitting at the end of a quiet cul-de-sac with views toward Vancouver Island. The Architectural details, especially the dramatic staircase, will surely impress as will the abundance of space. With easy potential for a suite, this 6-bedroom, 6-bathroom home has more than enough space to house an extended family and those working from home. The open floor plan is an entertainers dream complete with cherry wood kitchen cabinets, granite island & hardwood flooring opening to a fantastic living/dining room and beautiful windows capturing the views. ATTENTION car enthusiasts in need of a 'man cave', this garage has plenty to offer with additional outdoor space and room for an RV. IMPRESSIVE!

KEY INFORMATION

MLS® R2676097

Residential Detached

Lynn Valley

6 Bedrooms

6 Bathrooms

5,347 SF

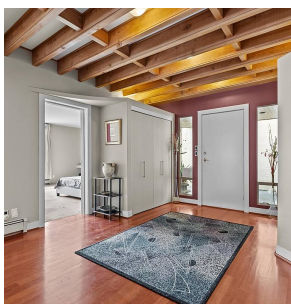
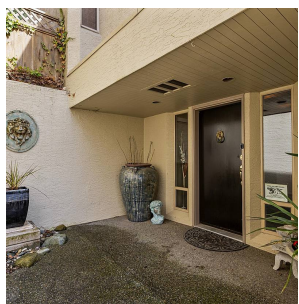
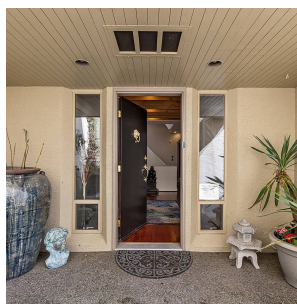
9,347 SF Lot

FEATURES

Year Built: 1991

Views: South View towards Island

Listed By: Royal LePage Sussex



rennie