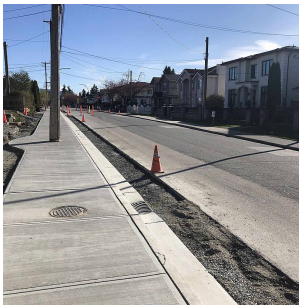


8155-8159 12th Avenue, Burnaby

\$2,600,000



TWO LOTS !!! Level, South East facing with lane access on quiet street of many newer homes with brand new curbs and sidewalks. Walk to all levels of public and private schools, parks, shops and transportation. Same family has owned and enjoyed this property since 1948. Current 60 year old home on one of the lots of very little value in need of many repairs. Mainly land value. Please don't disturb the occupant. Call your realtor or listing agent for details. Each lot is 32' x 146' & 4672 square feet. Build new homes of up to 2803 square feet of living space for each lot. City of Burnaby may allow laneway homes in the future. Your opportunity is here!

KEY INFORMATION

MLS® R2676311

Land Only

East Burnaby

0 Bedrooms

0 Bathrooms

0 SF

9,344 SF Lot

FEATURES

Listed By: Sutton Group-West Coast Realty

rennie