

8 1420 Chesterfield Avenue, North Vancouver

\$397,000



Lowest priced one bedroom condo in North Vancouver! 55+ 1 BR/1 BA renovated condo. only 10 units in the building, huge potential for future development, This top floor, corner unit has a good floorplan with large windows that brighten up the entire living area. , Dining area off the kitchen is a perfect fit for your dining table and leaves plenty of space for a home office area in the main living room. This well-kept three story walk-up is in the heart of Central Lonsdale. Whole foods, City Market and many great restaurants. Take a stroll around gorgeous Victoria Park on a crisp fall day or go down to Shipyards District on a sunny evening. Just minutes from Highway 1 and a half block from transit comes with a storage locker, Sorry no pets/rentals! easy to show.

KEY INFORMATION

MLS® R2676395

Residential Attached

Central Lonsdale

1 Bedroom

1 Bathroom

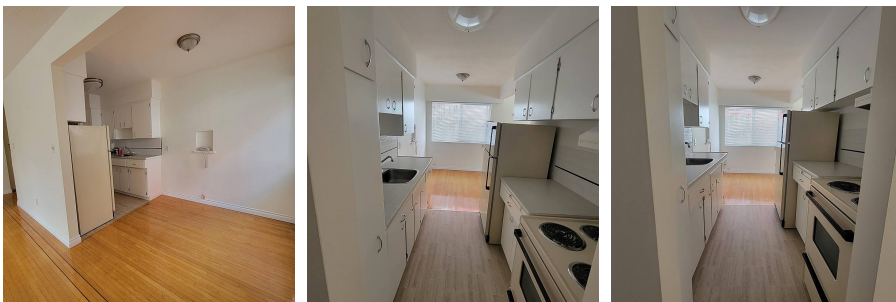
650 SF

\$468.18 Maintenance Fees

FEATURES

Year Built: 1957

Listed By: Team 3000 Realty Ltd.



rennie