

# 1210 Burkemont Place, Coquitlam

\$2,198,000



Welcome to 1210 Burkemont Place, Burke Mountain, Coquitlam! This well maintained and customized cozy home was highly quality built by Mascone. Spacious and bright modern design offers you living room, dining room, 18 feet high ceiling family room breakfast area and kitchen on the main, four over sized bedrooms above. Plus a huge recreation room and a two bedroom mortgage helper downstairs! Don't miss!

## KEY INFORMATION

MLS® R2676720

Residential Detached

Burke Mountain

5 Bedrooms

4 Bathrooms

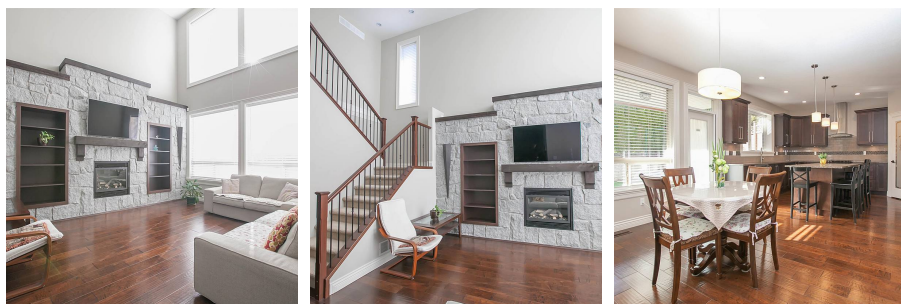
3,924 SF

4,521 SF Lot

## FEATURES

Year Built: 2012

Listed By: Pacific Evergreen Realty Ltd.



rennie