

3716 Harwood Crescent, Abbotsford

\$1,300,000



This quiet and family oriented neighbourhood is walking distance to Chief Dan George School, Dr. Roberta Elementary School, Shopping, parks & Transit! Traditional upstairs 3 bedroom rancher layout. Lovely south facing backyard for gardeners. Master Bedroom leads out to the covered patio with hot tub. Downstairs has 1 bedroom & office space or convert to a 2nd bedroom. Central A/C, koi fish pond, double car garage with RV parking. Bring your own ideas to make it just the way you like!

KEY INFORMATION

MLS® R2676992

Residential Detached

Central Abbotsford

4 Bedrooms

3 Bathrooms

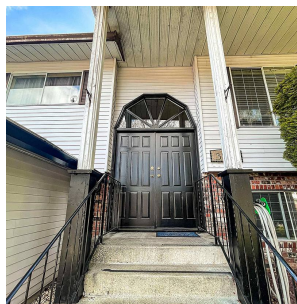
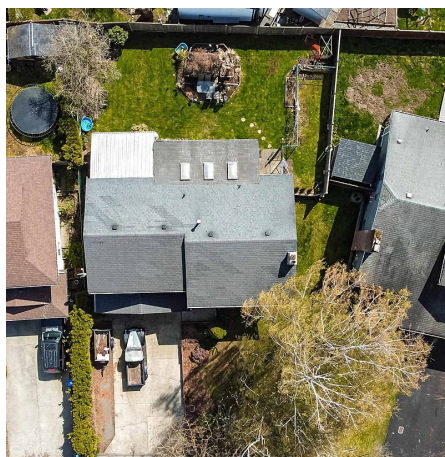
1,920 SF

6,343 SF Lot

FEATURES

Year Built: 1980

Listed By: Keller Williams Elite Realty



rennie