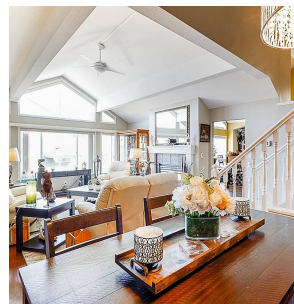
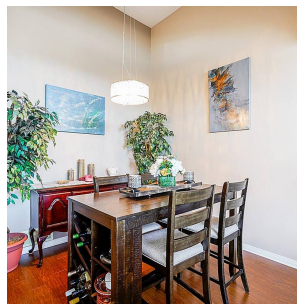
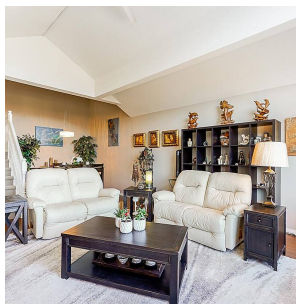


25 8590 Sunrise Drive, Chilliwack

\$919,900



Welcome to the prestigious gated community of Maple Hills on Chilliwack Mountain! This SE facing 3 bed/3 bath end unit offers beautiful views of the Chilliwack Valley & mountains from the front deck or privacy from the rear patio. Over 2500sqft of living space w/ a unique floor plan featuring vaulted ceilings, fully updated chef's kitchen w/ new appliances & custom cabinets separated from the open lvg/dng areas by a showpiece 2 sided fireplace. Primary suite with w/i closet & beautiful ensuite w/ separate tub & shower, 2 addl spacious bedrooms, huge media rm & rec room w/ 2nd fireplace and large double sbs garage! A/C, updated lighting & freshly painted in earthy clr schm. 2 pets allowed (any sz) & no rentals. Recent bldg upgrades incl roof & deck - nothing to do but move right in!

KEY INFORMATION

MLS® R2677052

Residential Attached

Chilliwack

3 Bedrooms

3 Bathrooms

2,507 SF

FEATURES

Year Built: 1996

Views: Mountain and Valley

Listed By: Pathway Executives Realty Inc.

rennie