

1833 Lilac Drive, Surrey

\$799,000



Welcome to Alderwood! This bright end unit has 2 large bedrooms upstairs with a deck overlooking the Greenspace. Close to schools, shopping, transit.

KEY INFORMATION

MLS® R2677164

Residential Attached

King George Corridor

2 Bedrooms

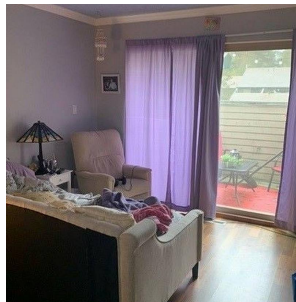
2 Bathrooms

1,685 SF

FEATURES

Year Built: 1980

Listed By: Hugh & McKinnon Realty Ltd.



rennie