

# 3825 Azalea Place, Port Coquitlam

\$1,399,999



House for sale on approx. 6720 SF Lot in a cul de sac , located in a quiet highly desirable neighbourhood in Oxford heights. Renovate and live or build a new home of your dreams.potential for a suite.

## KEY INFORMATION

MLS® R2677252

Residential Detached

Oxford Heights

3 Bedrooms

2 Bathrooms

1,923 SF

6,720 SF Lot

## FEATURES

Year Built: 1969

Listed By: Stonehaus Realty Corp.

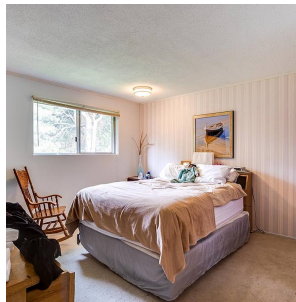


## 25 Azalea Pl

Coquitlam

OK 1,182 SQ.FT. BDR 145 SQ.FT.  
OK 310 SQ.FT. GARAGE 280 SQ.FT.  
MT AREA 1,492 SQ.FT.

Mix  
and  
materials



rennie