

201 2059 Chesterfield Avenue, North Vancouver

\$850,000



Massive, private, south-west exposed patio in Central Lonsdale. Ridge Park Gardens is an adult oriented building (55+) located right on Wagg Creek Park and just a block away from some of the best deli's, produce stores, and more, that Lonsdale has to offer. The home itself is tucked nicely away from the street, on the back side of the building, over looking the park. The dramatically oversized patio, 837 sq ft, provides a blank canvas for all your gardening fancies and a perfect space to read a book and listen to the birdies. This home has 2 generously sized bedrooms, 2 full bathrooms, a big living room, warmed by a gas fire place and equipped with a picture window overlooking your private garden, and all new appliances in the kitchen.Gone!..... Awaiting probate

KEY INFORMATION

MLS® R2677773

Residential Attached

Central Lonsdale

2 Bedrooms

2 Bathrooms

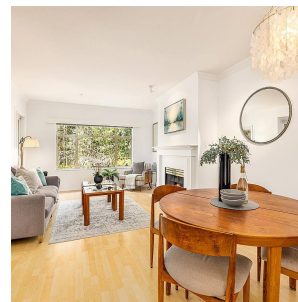
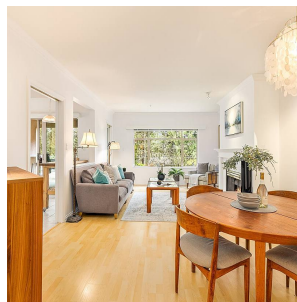
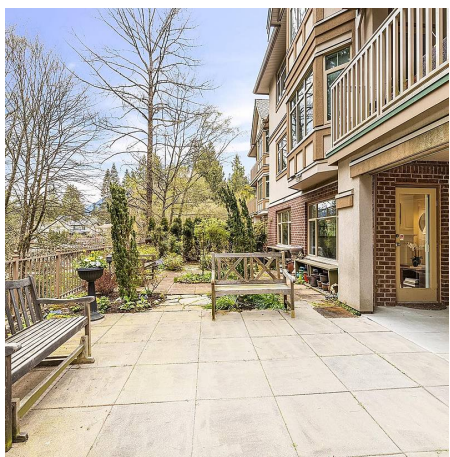
1,055 SF

\$555.68 Maintenance Fees

FEATURES

Year Built: 1995

Listed By: Stilhavn Real Estate Services



rennie