

25 6577 Southdownne Place, Chilliwack

\$819,900



Exceptional end unit townhome in the coveted Harvest Square community. Superb private location this family-oriented and pet friendly complex. The yard is a lovely sanctuary, fully fenced, & bordered by mature trees. So many windows facing south & west makes this home exceptionally bright & welcoming. Three bedrooms on upper level are all a nice size. The principle suite is truly king size & the ensuite bath is wonderful with both a big soaker tub and a shower. Home has been well-cared for over the years. Basement level just completed in past few years as a brilliant family room w/ tasteful bar & a stunning new bathroom. Loads of storage both down here & also in the double garage. Features a full length driveway w/ room for your truck. Not just another townhouse, it's a special home.

KEY INFORMATION

MLS® R2677962

Residential Attached

Chilliwack

3 Bedrooms

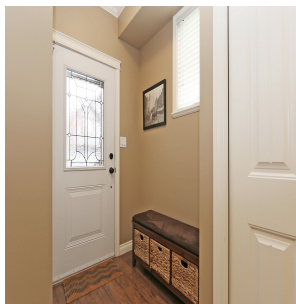
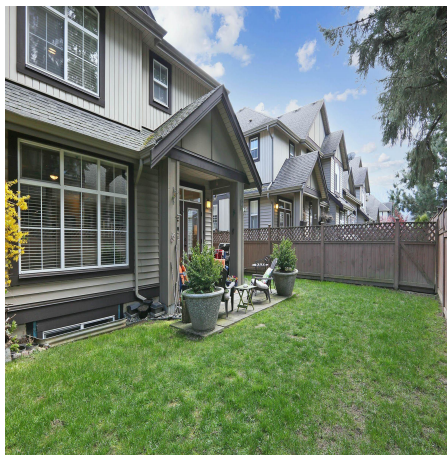
4 Bathrooms

2,227 SF

FEATURES

Year Built: 2007

Listed By: RE/MAX Nyda Realty Inc.



rennie