

# 606 2635 Prince Edward Street, Vancouver

\$1,274,900



Welcome to the top floor of SOMA Lofts in the heart of Mount Pleasant! Penthouse 606 offers 10.3 Ft ceilings throughout & 1,022 SqFt conveniently delegated on one single level. For the entertainer in you, the open concept living/dining/kitchen area opens seamlessly out onto your corner wrap around 231 SqFt Patio with completely unobstructed views of Downtown Vancouver & the North Shore Mountains! Polished concrete floors & exposed concrete feature walls throughout gives you another element of true loft living amongst the endless amenities of Mount Pleasant in East Vancouver. Common Gym & 5th floor patio are at your disposal here. Unit offers a new kitchen island countertop & pain throughout. 2 Parking + locker also at your convenience. In-suite Storage easily big enough for office!

## KEY INFORMATION

MLS® R2678125

Residential Attached

Mount Pleasant

2 Bedrooms

2 Bathrooms

1,022 SF

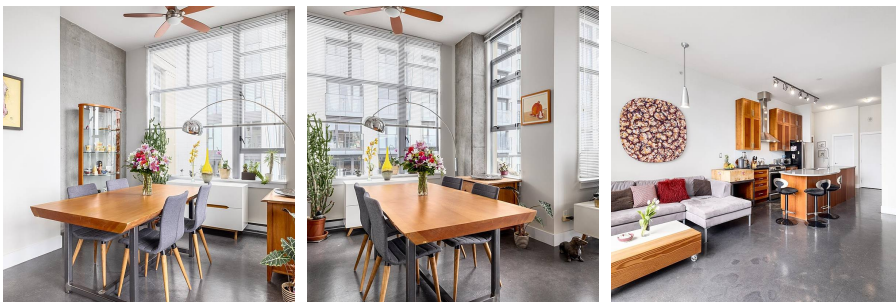
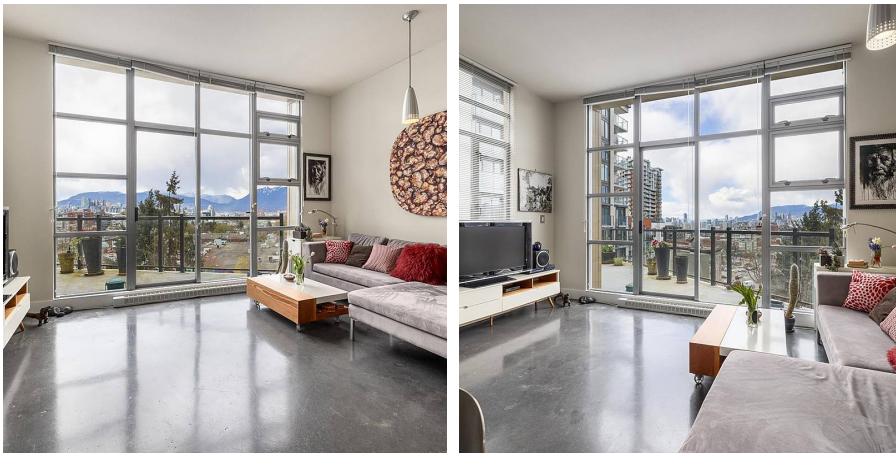
\$473.71 Maintenance Fees

## FEATURES

Year Built: 2005

Views: Northshore Mountains Downtown

Listed By: Oakwyn Realty Downtown Ltd.



rennie