

# 45639 Newby Drive, Chilliwack

\$1,950,000



INVESTOR ALERT ! .61 acre in the heart of Sardis, may have future potential for subdivision. This prime real estate is in close proximity to all amenities, schools, UFV and minutes from Cultus lake. Potential to build a COACH HOUSE for added income. Enjoy magnificent well maintained 5 bedroom 4 bath family home on quiet cul-de-sac. Kidney shaped inground pool & hot tub, stunning fountain & meandering creek out back. Gourmet oak kitchen w/ island, pantry, vaulted ceiling and eating nook, master suite on main, walk in closet & 3pc ensuite, 3 bdrms up, hardwood floors in family room. Formal dining rm with fireplace, vaulted ceiling in living rm. Walkout basement w/ newly updated inlaw suite. Large garage, RV parking, huge crawl space, upgraded windows, heat pump, furnace, A/C, and more....

## KEY INFORMATION

MLS® R2677904

Residential Detached

Chilliwack

5 Bedrooms

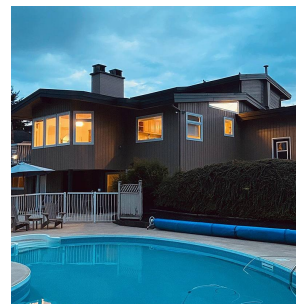
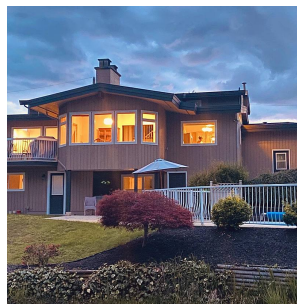
4 Bathrooms

3,366 SF

## FEATURES

Year Built: 1974

Listed By: HomeLife Advantage Realty Ltd



rennie