

# 20225 Lorne Avenue, Maple Ridge

\$998,900



UPDATED RANCHER with HEAT PUMP/AIR CONDITIONING!!!! 3 bed/2 bath cute & cozy updated rancher situated on large 60 x 120 lot in west Maple Ridge. Kitchen offers maple Cabinets, granite counter & stainless appliances, updated baths & designer wall features. Ample sized rooms can fit big furniture. Plenty of windows for natural light. Sliders lead out to the SUNNY & PRIVATE fully fenced backyard with entertainment sized 15 x 15 deck & gazebo. Plenty of parking ... RV anyone? ... and all the toys!! ROOF 5 YEARS YOUNG.

## KEY INFORMATION

MLS® R2678071

Residential Detached  
Southwest Maple Ridge

3 Bedrooms

2 Bathrooms

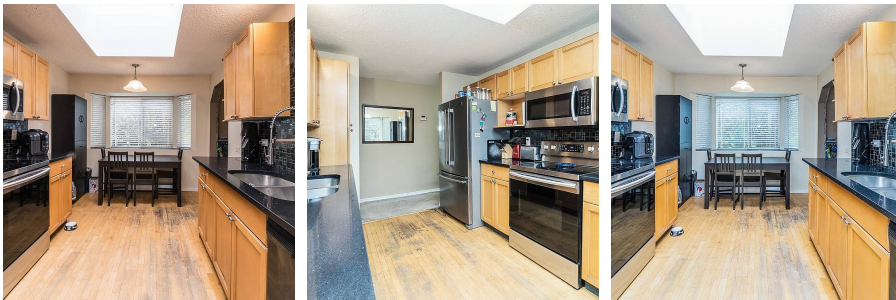
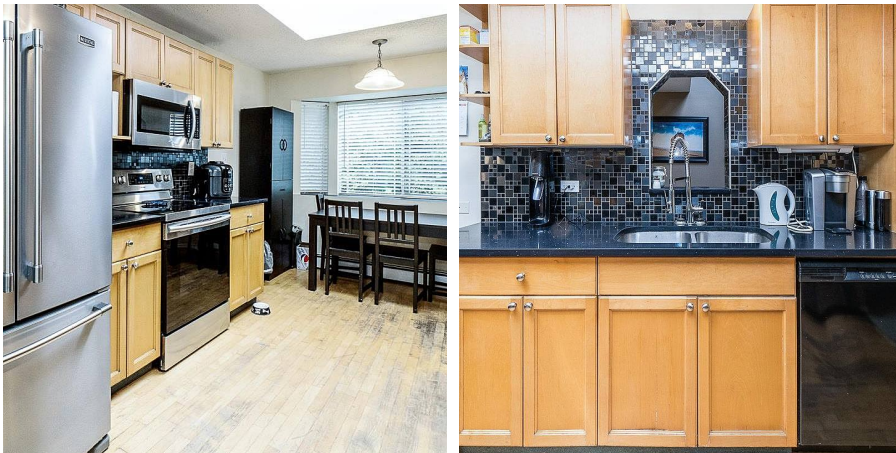
1,204 SF

7,200 SF Lot

## FEATURES

Year Built: 1950

Listed By: Keller Williams Elite Realty



rennie